

## CD13 RABBIT MAB

**Cat.#:** N261611

**Product Name:** Anti-CD13 Rabbit Monoclonal Antibody

**Synonyms:** ANPEP; APN; CD13; PEPN; Aminopeptidase N; AP-N; hAPN; Alanyl aminopeptidase; Aminopeptidase M; AP-M; Microsomal aminopeptidase; Myeloid plasma membrane glycoprotein CD13; gp150; CD antigen CD13

**UNIPROT ID:** P15144

**Background:** Aminopeptidase N (APN, CD13) is a widely expressed, membrane-bound proteolytic enzyme that breaks down peptides during digestion, cleaves cell surface antigens during antigen presentation, and acts as a receptor for human viruses, including several coronaviruses. Plays a role in the final digestion of peptides generated from hydrolysis of proteins by gastric and pancreatic proteases.

**Immunogen:** A synthetic peptide of human CD13

**Applications:** WB,IHC-F,IHC-P,ICC/IF,IP

**Recommended Dilutions:** WB: 1/500-1/1000 IHC: 1/50-1/100 IF: 1/50-1/200 IP: 1/20

**Host Species:** Rabbit

**Clonality:** Rabbit Monoclonal

**Clone ID:** R07-2G8

**MW:** Calculated MW: 110 kDa; Observed MW: 160 kDa

**Isotype:** IgG

**Purification:** Affinity Purified

**Species Reactivity:** Human,Rat

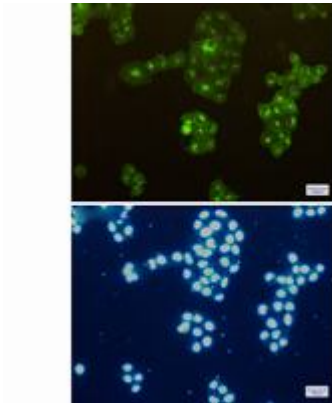
**Conjugation:** Unconjugated

**Modification:** Unmodified

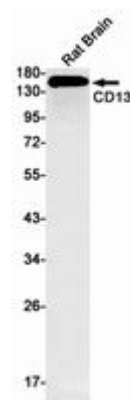
**Constituents:** PBS (without Mg<sup>2+</sup> and Ca<sup>2+</sup>), pH 7.3 containing 50% glycerol, 0.5% BSA and 0.02% sodium azide

**Research Areas:** Immunology

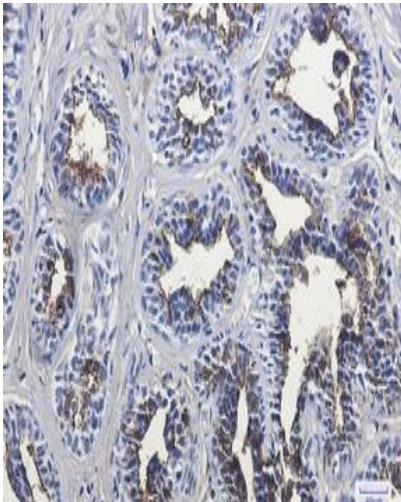
**Storage & Shipping:** Store at -20°C. Avoid repeated freezing and thawing



Immunocytochemistry analysis of CD13 (green) in Hela using CD13 antibody, and DAPI (blue)



Western blot analysis of CD13 in rat Brain lysates using CD13 antibody.



Immunohistochemistry analysis of paraffin-embedded Human breast cancer using CD13 antibody. High-pressure and temperature Sodium Citrate pH 6.0 was used for antigen retrieval.