

CD130 RABBIT PAB

Cat.#: N226078

Product Name: Anti-CD130 Rabbit pAb

Synonyms: Interleukin-6 receptor subunit beta ,IL-6 receptor subunit beta,IL-6R subunit beta,IL-6R-beta, IL-6RB,CDw130

UNIPROT ID: P40189

Background: The receptor systems for IL6, LIF, OSM, CNTF, IL11, CTF1 and BSF3 can utilize IL6ST for initiating signal transmission. Binding of IL6 to IL6R induces IL6ST homodimerization and formation of a high-affinity receptor complex, which activates the intracellular JAK-MAPK and JAK-STAT3 signaling pathways.

Immunogen: A synthesized peptide derived from human CD130/gp130

Applications: WB,IHC-P

Recommended Dilutions: WB: 1/500-1/1000 IHC: 1/50-1/100

Host Species: Rabbit

Clonality: Rabbit Polyclonal

Clone ID: [Clone ID]

MW: Calculated MW: 104 kDa; Observed MW: 130-140kDa

Isotype: IgG

Purification: Affinity Purified

Species Reactivity: Human,Mouse

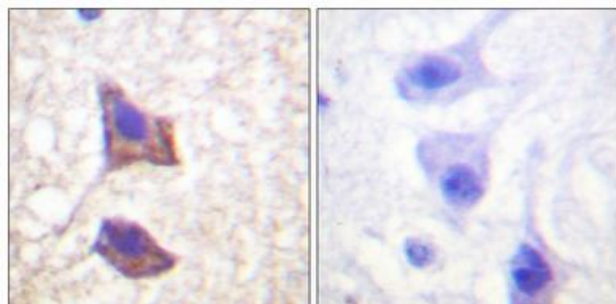
Conjugation: Unconjugated

Modification: Unmodified

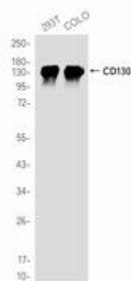
Constituents: PBS (without Mg²⁺ and Ca²⁺), pH 7.3 containing 50% glycerol, 0.5% BSA and 0.02% sodium azide

Research Areas: Cell Biology

Storage & Shipping: Store at -20°C. Avoid repeated freezing and thawing



Immunohistochemistry analysis of paraffin-embedded human brain using CD130 antibody. High-pressure and temperature Sodium Citrate pH 6.0 was used for antigen retrieval. Sample with blocking peptide on the right.



Western blot analysis of CD130 in 293T, COLO lysates using CD130 antibody.