

CD14 RABBIT PAB

Cat.#: S218266

Product Name: Anti-CD14 Rabbit Polyclonal Antibody

Synonyms:

UNIPROT ID: P08571 (Gene Accession - BC010507)

Background: The protein encoded by this gene is a surface antigen that is preferentially expressed on monocytes/macrophages. It cooperates with other proteins to mediate the innate immune response to bacterial lipopolysaccharide, and to viruses. This gene has been identified as a target candidate in the treatment of SARS-CoV-2-infected patients to potentially lessen or inhibit a severe inflammatory response. Alternative splicing results in multiple transcript variants encoding the same protein.

Immunogen: Fusion protein of human CD14

Applications: ELISA, WB, IHC

Recommended Dilutions: IHC: 50-200;WB: 500-2000;ELISA: 5000-10000

Host Species: Rabbit

Clonality: Rabbit Polyclonal

Isotype: Immunogen-specific rabbit IgG

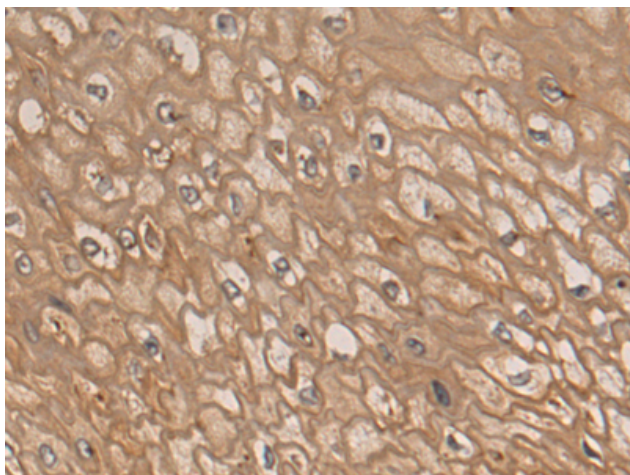
Purification: Antigen affinity purification

Species Reactivity: Human

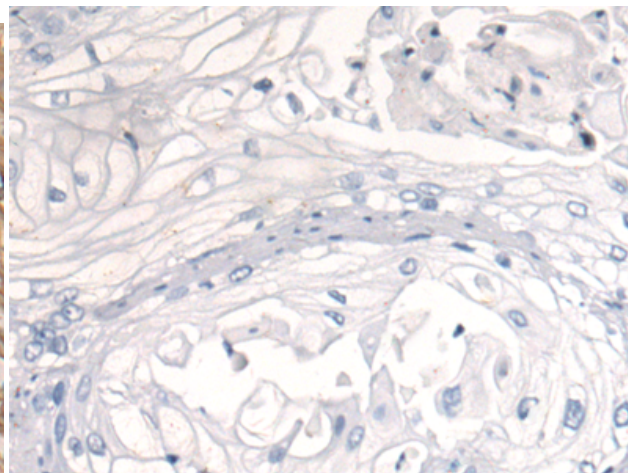
Constituents: PBS (without Mg²⁺ and Ca²⁺), pH 7.4, 150 mM NaCl, 0.05% Sodium Azide and 40% glycerol

Research Areas: Immunology, Stem Cells

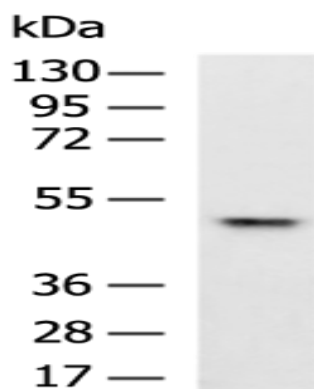
Storage & Shipping: Store at -20°C. Avoid repeated freezing and thawing



Immunohistochemistry analysis of paraffin embedded Human esophagus cancer tissue using 218266 (CD14 Antibody) at a dilution of 1/70 (Cytoplasm and Cell membrane).



In comparison with the IHC on the left, the same paraffin-embedded Human esophagus cancer tissue is first treated with the fusion protein and then with 218266 (Anti-CD14 Antibody) at dilution 1/70.



Gel: 8% SDS-PAGE, Lysate: 40 μ g;
Lane: A549 cell lysate;
Primary antibody: 218266 (CD14 Antibody) at dilution 1/500;
Secondary antibody: HRP-conjugated Goat anti rabbit IgG at 1/5000 dilution;
Exposure time: 1 minute