

CD16 (9G6) MOUSE MAB

Cat.#: N261233

Product Name: Anti-CD16 (9G6) Mouse Monoclonal Antibody

Synonyms: IGFR3; CD16; CD16a; IMD20

UNIPROT ID: P08637

Background: Receptor for the Fc region of IgG. Binds complexed or aggregated IgG and also monomeric IgG. Mediates antibody-dependent cellular cytotoxicity (ADCC) and other antibody-dependent responses, such as phagocytosis.

Immunogen: Synthetic Peptide of CD16

Applications: WB,IHC-P

Recommended Dilutions: WB: 1/500-1/1000 IHC: 1/50-1/100

Host Species: Mouse

Clonality: Mouse Monoclonal

Clone ID: 9G6-6D7-1H3

MW: Calculated MW: 29 kDa; Observed MW: 45 kDa

Isotype: IgG1

Purification: Affinity Purified

Species Reactivity: Human

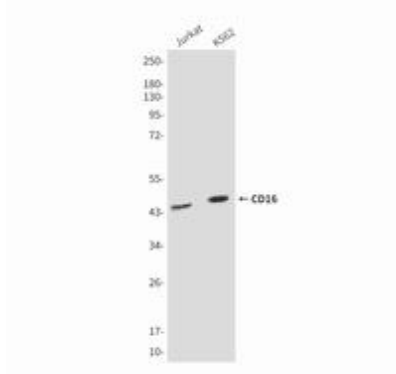
Conjugation: Unconjugated

Modification: Unmodified

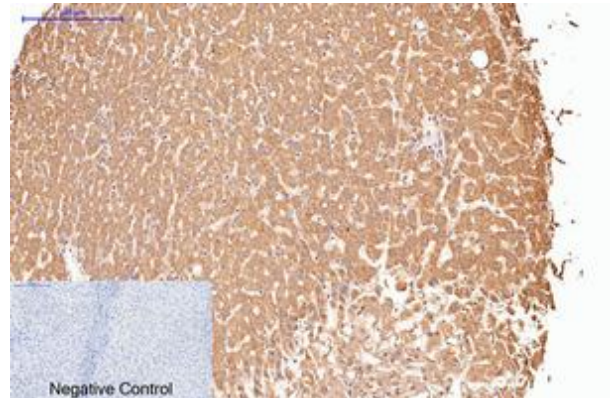
Constituents: PBS (without Mg²⁺ and Ca²⁺), pH 7.3 containing 50% glycerol, 0.5% BSA and 0.02% sodium azide

Research Areas: Immunology

Storage & Shipping: Store at -20°C. Avoid repeated freezing and thawing



Western blot analysis of CD16 (9G6) in Jurkat, K562 lysates using CD16 (9G6) antibody



Immunohistochemistry analysis of paraffin-embedded Human liver tissue using CD16 (9G6) antibody. High-pressure and temperature Sodium Citrate pH 6.0 was used for antigen retrieval. Negative control was used by secondary antibody only.