

## CD166 RABBIT MAB

**Cat.#:** N261983

**Product Name:** Anti-CD166 Rabbit Monoclonal Antibody

**Synonyms:** ALCAM; MEMD; CD166 antigen; Activated leukocyte cell adhesion molecule; CD166

**UNIPROT ID:** Q13740

**Background:** Cell adhesion molecule that binds to CD6. Involved in neurite extension by neurons via heterophilic and homophilic interactions. May play a role in the binding of T- and B-cells to activated leukocytes, as well as in interactions between cells of the nervous system.

**Immunogen:** A synthetic peptide of human CD166

**Applications:** WB,IHC-F,IHC-P,ICC/IF,IP

**Recommended Dilutions:** WB: 1/500-1/1000 IHC: 1/50-1/100 IF: 1/50-1/200 IP: 1/20

**Host Species:** Rabbit

**Clonality:** Rabbit Monoclonal

**Clone ID:** R03-2E5

**MW:** Calculated MW: 65 kDa; Observed MW: 105 kDa

**Isotype:** IgG

**Purification:** Affinity Purified

**Species Reactivity:** Human,Mouse,Rat

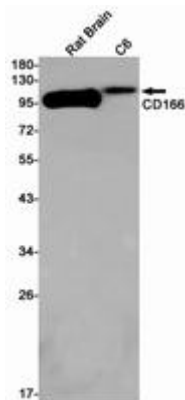
**Conjugation:** Unconjugated

**Modification:** Unmodified

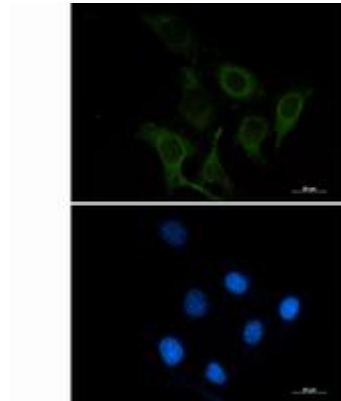
**Constituents:** PBS (without Mg<sup>2+</sup> and Ca<sup>2+</sup>), pH 7.3 containing 50% glycerol, 0.5% BSA and 0.02% sodium azide

**Research Areas:** Immunology

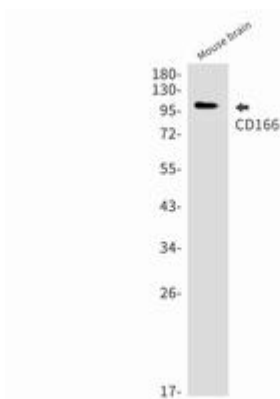
**Storage & Shipping:** Store at -20°C. Avoid repeated freezing and thawing



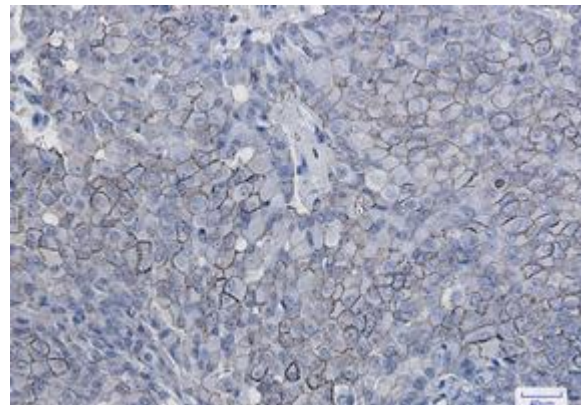
Western blot analysis of CD166 in rat Brain, C6 lysates using CD166 antibody



Immunocytochemistry analysis of CD166 (green) in SKOV-3 using CD166 antibody, and DAPI (blue).



Western blot analysis of CD166 in mouse brain lysates using CD166 antibody.



Immunohistochemistry analysis of paraffin-embedded Human breast cancer using CD166 antibody. High-pressure and temperature Sodium Citrate pH 6.0 was used for antigen retrieval.