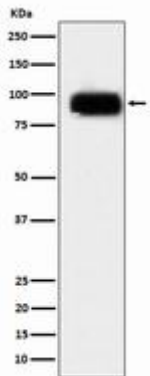


**CD166 RABBIT PAB****Cat.#:** N225913**Product Name:** Anti-CD166 Rabbit pAb**Synonyms:** ALCAM; MEMD; CD166 antigen; Activated leukocyte cell adhesion molecule; CD166**UNIPROT ID:** Q13740**Background:** Cell adhesion molecule that binds to CD6. Involved in neurite extension by neurons via heterophilic and homophilic interactions. May play a role in the binding of T- and B-cells to activated leukocytes, as well as in interactions between cells of the nervous system.**Immunogen:** A synthesized peptide derived from human CD166**Applications:** WB,IHC-P,ICC/IF,IP,FC**Recommended Dilutions:** WB: 1/500-1/1000 IHC: 1/50-1/100 IF: 1/50-1/200 IP: 1/20 FC: 1/50-1/100**Host Species:** Rabbit**Clonality:** Rabbit Polyclonal**Clone ID:** -**MW:** Calculated MW: 65 kDa; Observed MW: 100 kDa**Isotype:** IgG**Purification:** Affinity Chromatography**Species Reactivity:** Human,Mouse,Rat**Conjugation:** Unconjugated**Modification:** Unmodified**Constituents:** PBS (without Mg<sup>2+</sup> and Ca<sup>2+</sup>), pH 7.3 containing 50% glycerol, 0.5% BSA and 0.02% sodium azide**Research Areas:** Immunology**Storage & Shipping:** Store at -20°C. Avoid repeated freezing and thawing



Western blot analysis of CD166 in Daudi lysates using CD166 antibody.