

## CD1A/B RABBIT PAB

**Cat.#:** N225146

**Product Name:** Anti-CD1a/b Rabbit pAb

**Synonyms:** T-cell surface antigen T6/Leu-6; hTa1 thymocyte antigen; CD antigen CD1a; CD antigen CD1b

**UNIPROT ID:** P06126/P29016

**Background:** Antigen-presenting protein that binds self and non-self lipid and glycolipid antigens and presents them to T-cell receptors on natural killer T-cells.

**Immunogen:** Synthetic peptide from human protein at AA range: 220-270

**Applications:** IHC-P,ELISA

**Recommended Dilutions:** IHC: 1/50-1/100 ELISA: 1/10000

**Host Species:** Rabbit

**Clonality:** Rabbit Polyclonal

**Clone ID:** -

**MW:** -

**Isotype:** IgG

**Purification:** Affinity Purified

**Species Reactivity:** Human

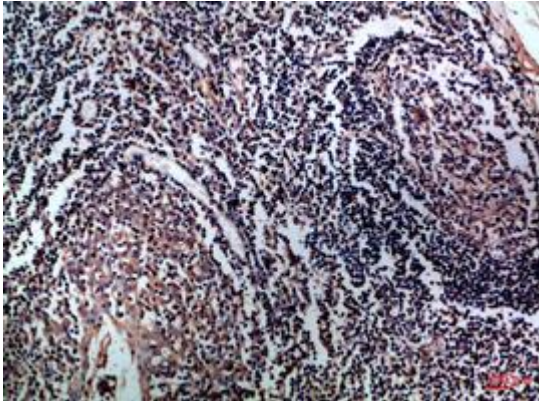
**Conjugation:** Unconjugated

**Modification:** Unmodified

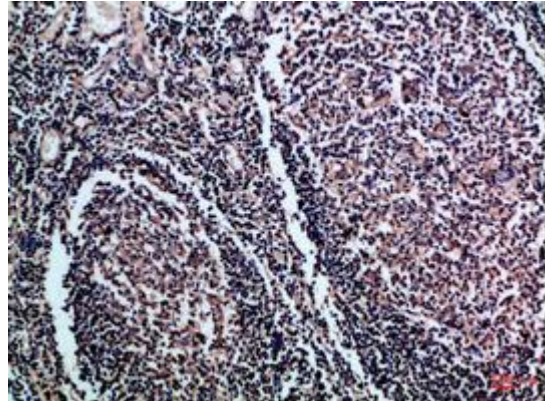
**Constituents:** PBS (without Mg<sup>2+</sup> and Ca<sup>2+</sup>), pH 7.3 containing 50% glycerol, 0.5% BSA and 0.02% sodium azide

**Research Areas:** Immunology

**Storage & Shipping:** Store at -20°C. Avoid repeated freezing and thawing



Immunohistochemical analysis of paraffin-embedded Human tonsils using CD1a/b antibody. High-pressure and temperature Sodium Citrate pH 6.0 was used for antigen retrieval.



Immunohistochemistry analysis of paraffin-embedded Human tonsil using CD1a/b antibody. High-pressure and temperature Sodium Citrate pH 6.0 was used for antigen retrieval.