

CD207 RABBIT PAB

Cat.#: S216610

Product Name: Anti-CD207 Rabbit Polyclonal Antibody

Synonyms: CLEC4K

UNIPROT ID: Q9UJ71 (Gene Accession - BC022278)

Background: The protein encoded by this gene is expressed only in Langerhans cells which are immature dendritic cells of the epidermis and mucosa. It is localized in the Birbeck granules, organelles present in the cytoplasm of Langerhans cells and consisting of superimposed and zippered membranes. It is a C-type lectin with mannose binding specificity, and it has been proposed that mannose binding by this protein leads to internalization of antigen into Birbeck granules and providing access to a nonclassical antigen-processing pathway. Mutations in this gene result in Birbeck granules deficiency or loss of sugar binding activity.

Immunogen: Fusion protein of human CD207

Applications: ELISA, WB, IHC

Recommended Dilutions: IHC: 250-500;WB: 500-2000;ELISA: 5000-10000

Host Species: Rabbit

Clonality: Rabbit Polyclonal

Isotype: Immunogen-specific rabbit IgG

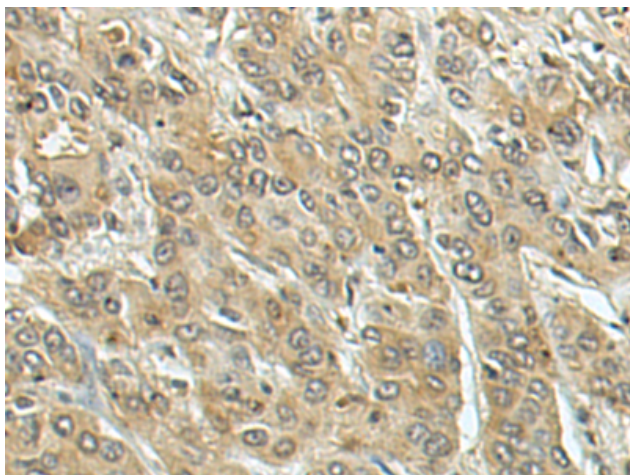
Purification: Antigen affinity purification

Species Reactivity: Human, Mouse

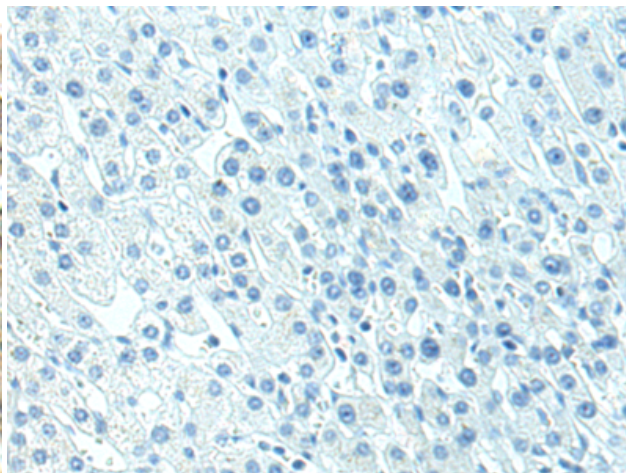
Constituents: PBS (without Mg²⁺ and Ca²⁺), pH 7.4, 150 mM NaCl, 0.05% Sodium Azide and 40% glycerol

Research Areas: Metabolism

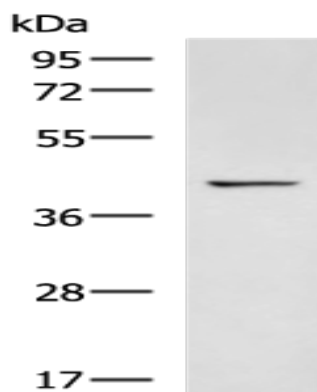
Storage & Shipping: Store at -20°C. Avoid repeated freezing and thawing



Immunohistochemistry analysis of paraffin embedded Human liver cancer tissue using 216610(CD207 Antibody) at a dilution of 1/240(Cytoplasm).



In comparison with the IHC on the left, the same paraffin-embedded Human liver cancer tissue is first treated with the fusion protein and then with 216610(Anti-CD207 Antibody) at dilution 1/240.



Gel: 8%SDS-PAGE, Lysate: 40 μ g;
Lane: Mouse skin tissue lysate;
Primary antibody: 216610(CD207 Antibody) at dilution 1/1300;
Secondary antibody: HRP-conjugated Goat anti rabbit IgG at 1/5000 dilution;
Exposure time: 1 minute