

## CD226 RABBIT MAB

**Cat.#:** N261988

**Product Name:** Anti-CD226 Rabbit Monoclonal Antibody

**Synonyms:** Platelet and T-cell activation antigen 1; CD226

**UNIPROT ID:** Q8K4F0

**Background:** Involved in intercellular adhesion, lymphocyte signaling, cytotoxicity and lymphokine secretion mediated by cytotoxic T-lymphocyte (CTL) and NK cell. Cell surface receptor for NECTIN2. Upon ligand binding, stimulates T-cell proliferation and cytokine production, including that of IL2, IL5, IL10, IL13, and IFNG. Competes with PVRIG for NECTIN2-binding.

**Immunogen:** Recombinant protein of mouse CD226

**Applications:** WB,IHC-F,IHC-P,ICC/IF,IP

**Recommended Dilutions:** WB: 1/500-1/1000 IHC: 1/50-1/100 IF: 1/50-1/200 IP: 1/20

**Host Species:** Rabbit

**Clonality:** Rabbit Monoclonal

**Clone ID:** R01-4C1

**MW:** Calculated MW: 38 kDa; Observed MW: 55-65 kDa

**Isotype:** IgG

**Purification:** Affinity Purified

**Species Reactivity:** Mouse

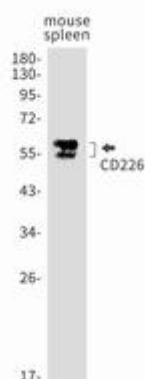
**Conjugation:** Unconjugated

**Modification:** Unmodified

**Constituents:** PBS (without Mg<sup>2+</sup> and Ca<sup>2+</sup>), pH 7.3 containing 50% glycerol, 0.5% BSA and 0.02% sodium azide

**Research Areas:** Immunology

**Storage & Shipping:** Store at -20°C. Avoid repeated freezing and thawing



Western blot analysis of CD226 in mouse spleen lysates using CD226 antibody.