

## CD232 RABBIT PAB

**Cat.#:** N225122

**Product Name:** Anti-CD232 Rabbit pAb

**Synonyms:** PLXNC1; VESPR; Plexin-C1; Virus-encoded semaphorin protein receptor; CD232

**UNIPROT ID:** O60486

**Background:** Receptor for SEMA7A, for smallpox semaphorin A39R, vaccinia virus semaphorin A39R and for herpesvirus Sema protein.

**Immunogen:** The antiserum was produced against synthesized peptide derived from the Internal region of human PLXNC1. AA range:811-860

**Applications:** WB,ELISA

**Recommended Dilutions:** WB: 1/500-1/1000 ELISA: 1/10000

**Host Species:** Rabbit

**Clonality:** Rabbit Polyclonal

**Clone ID:** -

**MW:** Calculated MW: 176 kDa; Observed MW: 176 kDa

**Isotype:** IgG

**Purification:** Affinity Purified

**Species Reactivity:** Human,Mouse,Rat

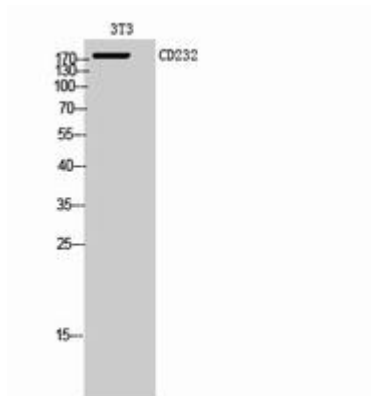
**Conjugation:** Unconjugated

**Modification:** Unmodified

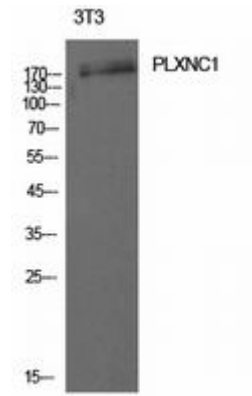
**Constituents:** PBS (without Mg<sup>2+</sup> and Ca<sup>2+</sup>), pH 7.3 containing 50% glycerol, 0.5% BSA and 0.02% sodium azide

**Research Areas:** Cancer

**Storage & Shipping:** Store at -20°C. Avoid repeated freezing and thawing



Western blot analysis of CD232 in 3T3 lysates using CD232 antibody.



Western blot analysis of PLXNC1 in 3T3 lysates using CD232 antibody.