

CD272 RABBIT MAB

Cat.#: N261990

Product Name: Anti-CD272 Rabbit Monoclonal Antibody

Synonyms: A630002H24; B- and T-lymphocyte-associated protein

UNIPROT ID: Q7TSA3

Background: Lymphocyte inhibitory receptor which inhibits lymphocytes during immune response.

Immunogen: Recombinant protein of mouse CD272

Applications: WB,IHC-P,IP

Recommended Dilutions: WB: 1/500-1/1000 IHC: 1/50-1/100 IP: 1/20

Host Species: Rabbit

Clonality: Rabbit Monoclonal

Clone ID: R09-4A1

MW: Calculated MW: 34 kDa; Observed MW: 55-80 kDa

Isotype: IgG

Purification: Affinity Purified

Species Reactivity: Human,Mouse

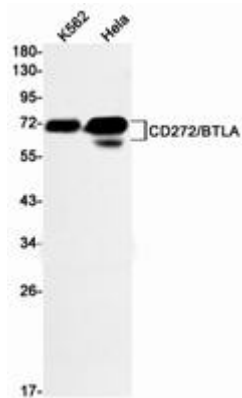
Conjugation: Unconjugated

Modification: Unmodified

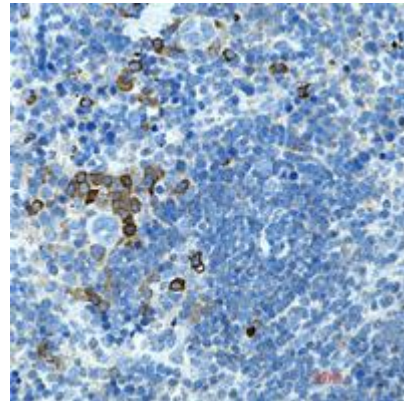
Constituents: PBS (without Mg²⁺ and Ca²⁺), pH 7.3 containing 50% glycerol, 0.5% BSA and 0.02% sodium azide

Research Areas: Immunology

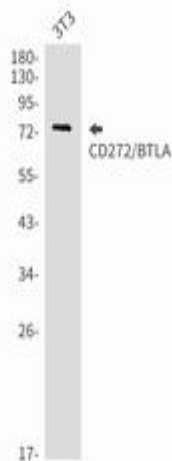
Storage & Shipping: Store at -20°C. Avoid repeated freezing and thawing



Western blot analysis of CD272/BTLA in K562, HeLa lysates using CD272/BTLA antibody



Immunohistochemistry analysis of paraffin-embedded mouse spleen using CD272 antibody. High-pressure and temperature Sodium Citrate pH 6.0 was used for antigen retrieval.



Western blot analysis of CD272/BTLA in 3T3 lysates using CD272/BTLA antibody.