

CD2AP RABBIT PAB

Cat.#: S220433

Product Name: Anti-CD2AP Rabbit Polyclonal Antibody

Synonyms: CMS

UNIPROT ID: Q9Y5K6 (Gene Accession - NP_036252)

Background: This gene encodes a scaffolding molecule that regulates the actin cytoskeleton. The protein directly interacts with filamentous actin and a variety of cell membrane proteins through multiple actin binding sites, SH3 domains, and a proline-rich region containing binding sites for SH3 domains. The cytoplasmic protein localizes to membrane ruffles, lipid rafts, and the leading edges of cells. It is implicated in dynamic actin remodeling and membrane trafficking that occurs during receptor endocytosis and cytokinesis. Haploinsufficiency of this gene is implicated in susceptibility to glomerular disease.

Immunogen: Synthetic peptide of human CD2AP

Applications: ELISA, WB, IHC

Recommended Dilutions: IHC: 100–300;WB: 1000–5000;ELISA: 2000–10000

Host Species: Rabbit

Clonality: Rabbit Polyclonal

Isotype: Immunogen-specific rabbit IgG

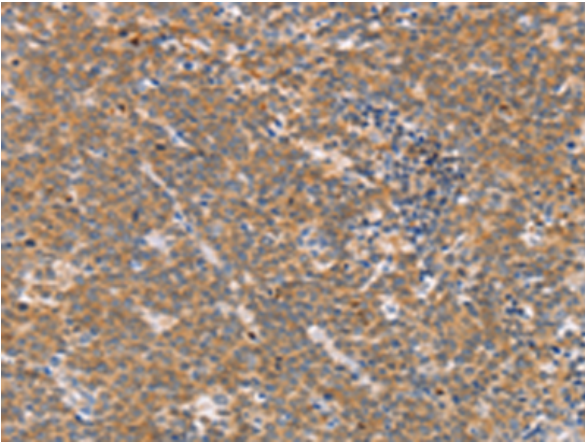
Purification: Antigen affinity purification

Species Reactivity: Human

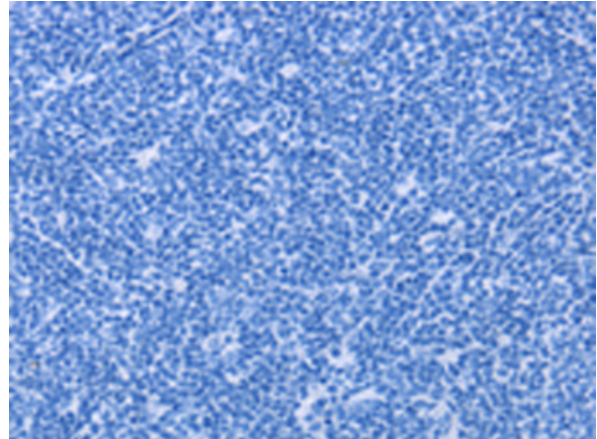
Constituents: PBS (without Mg²⁺ and Ca²⁺), pH 7.4, 150 mM NaCl, 0.05% Sodium Azide and 40% glycerol

Research Areas: Signal Transduction

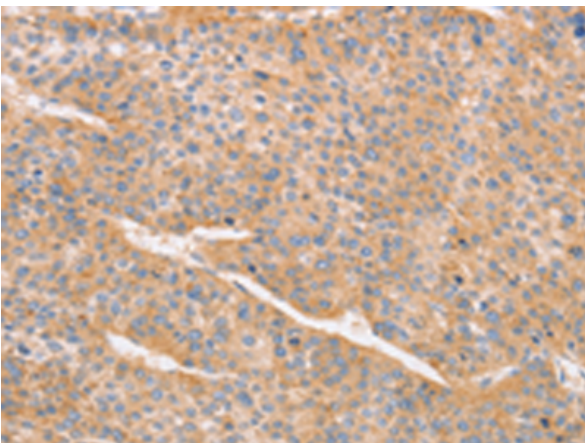
Storage & Shipping: Store at -20°C. Avoid repeated freezing and thawing



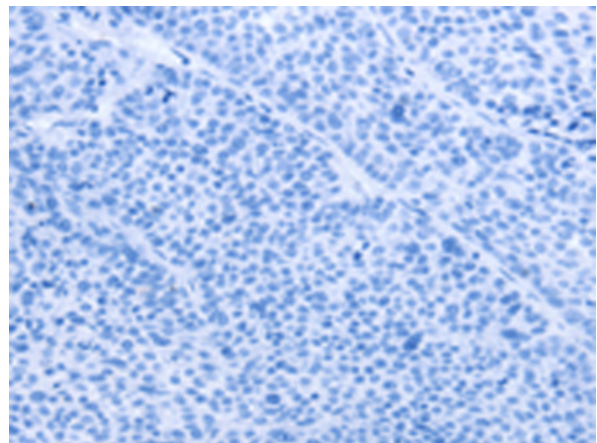
Immunohistochemistry analysis of paraffin embedded Human Lymphoma tissue using 220433(CD2AP Antibody) at a dilution of 1/70(Cytoplasm).



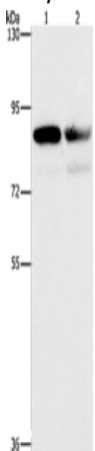
In comparison with the IHC on the left, the same paraffin-embedded Human Lymphoma tissue is first treated with the synthetic peptide and then with 220433(Anti-CD2AP Antibody) at dilution 1/70.



The image on the left is immunohistochemistry of paraffin-embedded Human liver cancer tissue using 220433(Anti-CD2AP Antibody) at a dilution of 1/70.



In comparison with the IHC on the left, the same paraffin-embedded Human liver cancer tissue is first treated with synthetic peptide and then with D261523(Anti-CD2AP Antibody) at dilution 1/70.



Gel: 6%SDS-PAGE, Lysate: 40 µg;
 Lane 1-2: A431 cells, Raji cells;
 Primary antibody: 220433(CD2AP Antibody) at dilution 1/1000;
 Secondary antibody: Goat anti rabbit IgG at 1/8000 dilution;
 Exposure time: 1 second



Product Description

Pioneering GTPase and Oncogene Product Development since 2010
