

## CD31 RABBIT PAB

**Cat.#:** N225510

**Product Name:** Anti-CD31 Rabbit pAb

**Synonyms:** Platelet endothelial cell adhesion molecule; PECAM-1; EndoCAM; GPIIA<sup>1</sup>; PECA1; CD antigen CD31

**UNIPROT ID:** P16284

**Background:** PECAM-1 a cell adhesion molecule expressed on platelets and at endothelial cell intercellular junctions. Plays a role in modulation of integrin-mediated cell adhesion, transendothelial migration, angiogenesis, apoptosis, cell migration, negative regulation of immune cell signaling, autoimmunity, macrophage phagocytosis, IgE-mediated anaphylaxis and thrombosis. Undergoes alternative splicing, generating multiple isoforms in vascular beds of various tissues.

**Immunogen:** synthesized peptide of human PECAM-1. AA range:686-735

**Applications:** WB,IHC-F,IHC-P,ICC/IF,ELISA

**Recommended Dilutions:** WB: 1/500-1/1000 IHC: 1/50-1/100 IF: 1/50-1/200 ELISA: 1/10000

**Host Species:** Rabbit

**Clonality:** Rabbit Polyclonal

**Clone ID:** -

**MW:** Calculated MW: 83 kDa; Observed MW: 130-140 kDa

**Isotype:** IgG

**Purification:** Affinity Purified

**Species Reactivity:** Human,Mouse

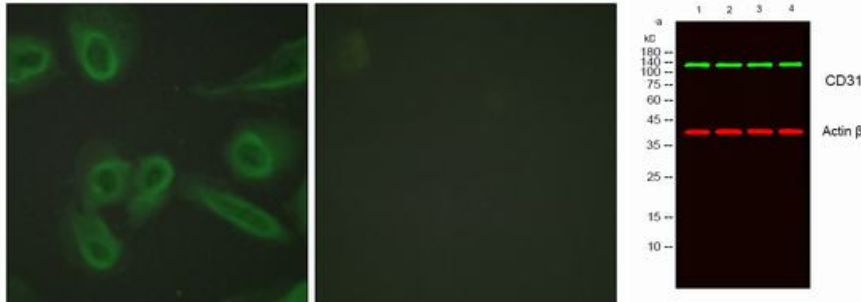
**Conjugation:** Unconjugated

**Modification:** Unmodified

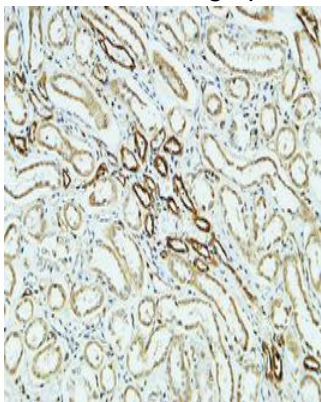
**Constituents:** PBS (without Mg<sup>2+</sup> and Ca<sup>2+</sup>), pH 7.3 containing 50% glycerol, 0.5% BSA and 0.02% sodium azide

**Research Areas:** Cardiovascular

**Storage & Shipping:** Store at -20°C. Avoid repeated freezing and thawing



Immunofluorescence analysis of CD31 in HeLa cells using CD31 antibody. The picture on the right is blocked using synthesized peptide. Western blot analysis of CD31 in HepG2, K562, L929, mouse brain lysates using CD31 antibody.



Immunohistochemistry analysis of paraffin-embedded Human kidney using CD31 antibody. High-pressure and temperature Sodium Citrate pH 6.0 was used for antigen retrieval.