

CD32B RABBIT MAB

Cat.#: N261570

Product Name: Anti-CD32B Rabbit Monoclonal Antibody

Synonyms: Fc fragment of IgG; low affinity IIb; receptor (CD32); CD32; FCG2; CD32B; FCGR2; IGFR2

UNIPROT ID: P31994

Background: Receptor for the Fc region of complexed or aggregated immunoglobulins gamma.

Immunogen: A synthetic peptide of human CD32B

Applications: WB,IHC-P

Recommended Dilutions: WB: 1/500-1/1000 IHC: 1/50-1/100

Host Species: Rabbit

Clonality: Rabbit Monoclonal

Clone ID: R07-4B5

MW: Calculated MW: 34 kDa; Observed MW: 44 kDa

Isotype: IgG

Purification: Affinity Purified

Species Reactivity: Human,Rat

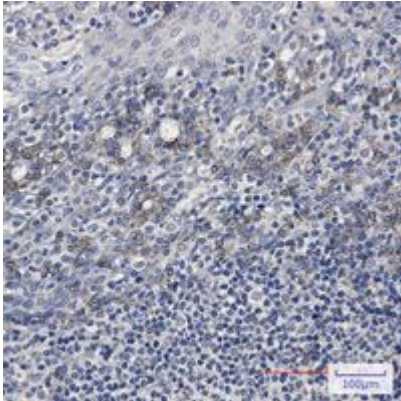
Conjugation: Unconjugated

Modification: Unmodified

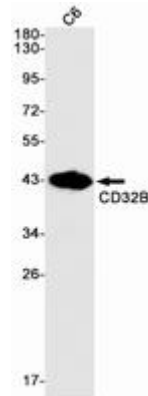
Constituents: PBS (without Mg²⁺ and Ca²⁺), pH 7.3 containing 50% glycerol, 0.5% BSA and 0.02% sodium azide

Research Areas: Immunology

Storage & Shipping: Store at -20°C. Avoid repeated freezing and thawing



Immunohistochemistry analysis of paraffin-embedded Human tonsil using CD32B antibody. High-pressure and temperature Sodium Citrate pH 6.0 was used for antigen retrieval.



Western blot analysis of CD32B in Sodium C6 lysates using CD32B antibody.