

CD35 RABBIT MAB

Cat.#: N261997

Product Name: Anti-CD35 Rabbit Monoclonal Antibody

Synonyms: C3 binding protein; C3b/C4b receptor; C3BR; C4BR; CD35; CR1; KN

UNIPROT ID: P17927

Background: Mediates cellular binding of particles and immune complexes that have activated complement.

Immunogen: A synthetic peptide of human CD35

Applications: WB,IHC-P

Recommended Dilutions: WB: 1/500-1/1000 IHC: 1/50-1/100

Host Species: Rabbit

Clonality: Rabbit Monoclonal

Clone ID: R06-6D1

MW: Calculated MW: 224 kDa; Observed MW: 280 kDa

Isotype: IgG

Purification: Affinity Purified

Species Reactivity: Human

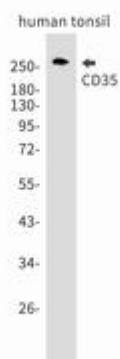
Conjugation: Unconjugated

Modification: Unmodified

Constituents: PBS (without Mg²⁺ and Ca²⁺), pH 7.3 containing 50% glycerol, 0.5% BSA and 0.02% sodium azide

Research Areas: Tags & Cell Markers

Storage & Shipping: Store at -20°C. Avoid repeated freezing and thawing



Western blot analysis of CD35 in Human tonsil lysates using CD35 antibody.



Product Description

Pioneering GTPase and Oncogene Product Development since 2010
