

## CD5 RABBIT PAB

**Cat.#:** S221699

**Product Name:** Anti-CD5 Rabbit Polyclonal Antibody

**Synonyms:** TI; LEU1

**UNIPROT ID:** P06127 (Gene Accession - NP\_055022 )

**Background:** CD5 (also designated Lyt-1) has been identified as a transmembrane glycoprotein that is expressed on 70% of normal peripheral blood lymphocytes and on virtually all T lymphocytes in thymus and peripheral blood. Activation of T cells through the T cell receptor (TCR) results in tyrosine phosphorylation of CD5, and the absence of CD5 renders T cells hyper-responsive to TCR-mediated activation. CD5 associates with the TCR/ CD3- $\zeta$  chain and with the Src family kinase Lck p56. In vitro studies have shown a 10- to 15-fold increase in the kinase activity of Lck bound to CD5. The B cell antigen, CD72, serves as a receptor for CD5. The consequence of CD5 binding to its cognate receptor is still in question and likely plays a role in thymic selection. May act as a receptor in regulating T-cell proliferation.

**Immunogen:** Synthetic peptide of human CD5

**Applications:** ELISA, IHC

**Recommended Dilutions:** IHC: 30-150; ELISA: 5000-10000

**Host Species:** Rabbit

**Clonality:** Rabbit Polyclonal

**Isotype:** Immunogen-specific rabbit IgG

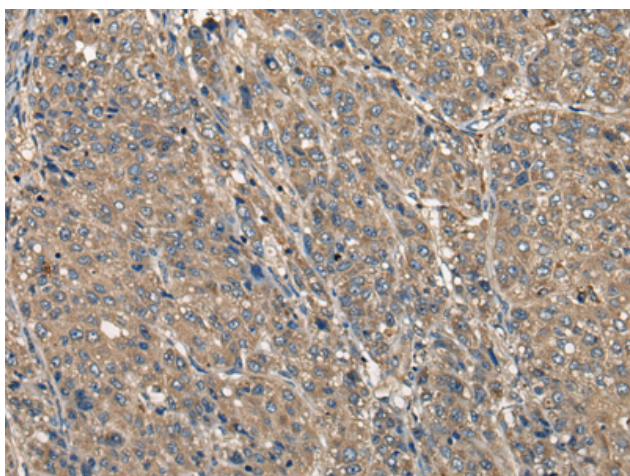
**Purification:** Antigen affinity purification

**Species Reactivity:** Human, Mouse, Rat

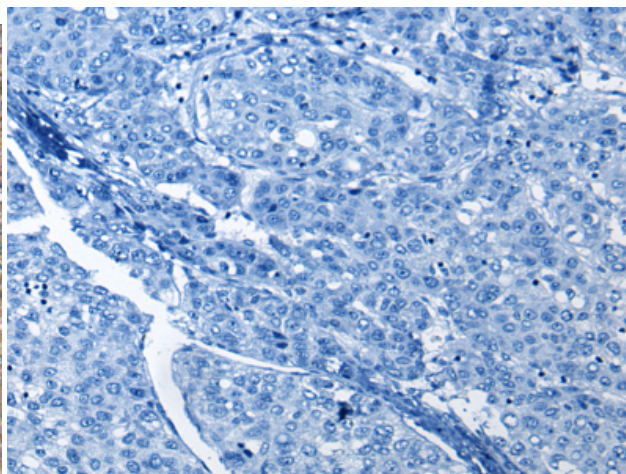
**Constituents:** PBS (without Mg<sup>2+</sup> and Ca<sup>2+</sup>), pH 7.4, 150 mM NaCl, 0.05% Sodium Azide and 40% glycerol

**Research Areas:** Immunology, Stem Cells

**Storage & Shipping:** Store at -20°C. Avoid repeated freezing and thawing



Immunohistochemistry analysis of paraffin embedded Human liver cancer tissue using 221699(CD5 Antibody) at a dilution of 1/30(Cell membrane).



In comparison with the IHC on the left, the same paraffin-embedded Human liver cancer tissue is first treated with the synthetic peptide and then with 221699(Anti-CD5 Antibody) at dilution 1/30.



# Product Description

Pioneering GTPase and Oncogene Product Development since 2010

---