

## CD52 RABBIT PAB

**Cat.#:** S222367

**Product Name:** Anti-CD52 Rabbit Polyclonal Antibody

**Synonyms:** HE5; CDW52; EDDM5

**UNIPROT ID:** P31358 (Gene Accession - NP\_001794 )

**Background:** May play a role in carrying and orienting carbohydrate, as well as having a more specific role.

**Immunogen:** Synthetic peptide of human CD52

**Applications:** ELISA, IHC

**Recommended Dilutions:** IHC: 50-200; ELISA: 5000-10000

**Host Species:** Rabbit

**Clonality:** Rabbit Polyclonal

**Isotype:** Immunogen-specific rabbit IgG

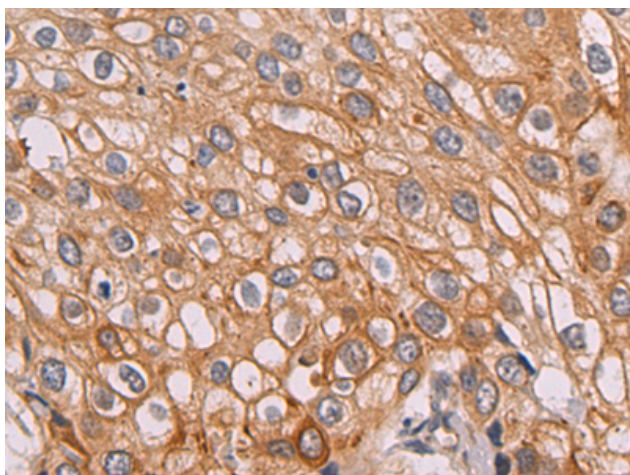
**Purification:** Antigen affinity purification

**Species Reactivity:** Human

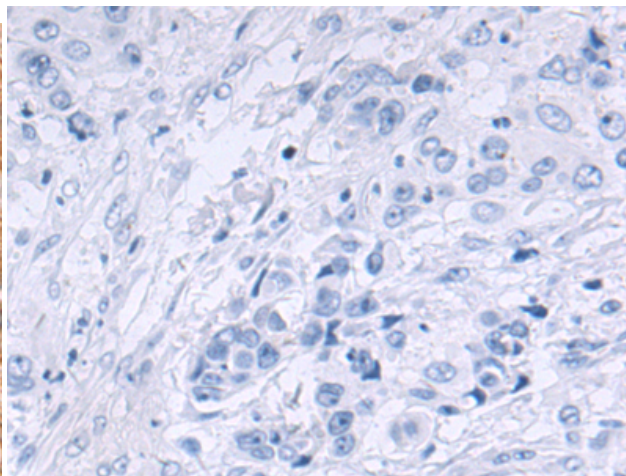
**Constituents:** PBS (without Mg<sup>2+</sup> and Ca<sup>2+</sup>), pH 7.4, 150 mM NaCl, 0.05% Sodium Azide and 40% glycerol

**Research Areas:** Immunology

**Storage & Shipping:** Store at -20°C. Avoid repeated freezing and thawing



Immunohistochemistry analysis of paraffin embedded Human cervical cancer tissue using 222367(CD52 Antibody) at a dilution of 1/50(Cell membrane).



In comparison with the IHC on the left, the same paraffin-embedded Human cervical cancer tissue is first treated with the synthetic peptide and then with 222367(Anti-CD52 Antibody) at dilution 1/50.