

**CD6(1G6) IGG1 CHIMERIC MAB****Cat.#:** 28568**Product Name:** Anti-CD6(1G6) IgG1 Chimeric Monoclonal Antibody**Synonyms:** TP120**Description:** Anti-CD6 antibody(1G6) IgG1 Chimeric Monoclonal Antibody**Background:** This gene encodes a protein found on the outer membrane of T-lymphocytes as well as some other immune cells. The encoded protein contains three scavenger receptor cysteine-rich (SRCR) domains and a binding site for an activated leukocyte cell adhesion molecule. The gene product is important for continuation of T cell activation. This gene may be associated with susceptibility to multiple sclerosis (PMID: 19525953, 21849685). Multiple transcript variants encoding different isoforms have been found for this gene. [provided by RefSeq, Dec 2011]**Applications:** Flow Cyt**Recommended Dilutions:** Flow Cyt 1/100**Host Species:** Rabbit**Isotype:** Rabbit/Human Fc chimeric IgG1**Purification:** Purified from cell culture supernatant by affinity chromatography**Species Reactivity:** Human CD6**Constituents:** Lyophilized from sterile PBS, pH 7.4. 5 % – 8% trehalose is added as protectants before lyophilization.**Storage & Shipping:** Store at -20°C to -80°C for 12 months in lyophilized form. After reconstitution, if not intended for use within a month, aliquot and store at -80°C (Avoid repeated freezing and thawing).

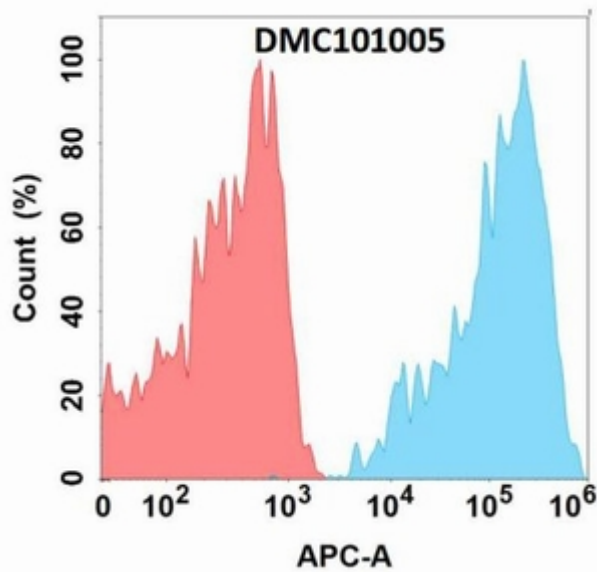


Figure 1. Flow cytometry analysis with Anti-CD6 (1G6) mAb on Expi293 cells transfected with human CD6 (Blue histogram) or Expi293 transfected with irrelevant protein (Red histogram).