

## CD7 RABBIT PAB

**Cat.#:** N225063

**Product Name:** Anti-CD7 Rabbit pAb

**Synonyms:** CD7; T-cell antigen CD7; GP40; T-cell leukemia antigen; T-cell surface antigen Leu-9; TP41; CD7

**UNIPROT ID:** P09564

**Background:** Not yet known.

**Immunogen:** The antiserum was produced against synthesized peptide derived from the Internal region of human CD7. AA range:51-100

**Applications:** WB,IHC-P,ELISA

**Recommended Dilutions:** WB: 1/500-1/1000 IHC: 1/50-1/100 ELISA: 1/10000

**Host Species:** Rabbit

**Clonality:** Rabbit Polyclonal

**Clone ID:** -

**MW:** Calculated MW: 25 kDa; Observed MW: 25 kDa

**Isotype:** IgG

**Purification:** Affinity Purified

**Species Reactivity:** Human

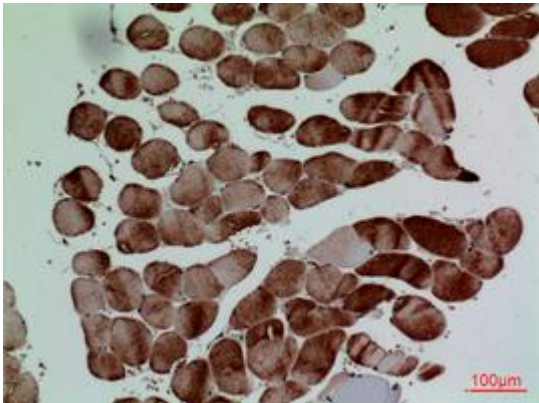
**Conjugation:** Unconjugated

**Modification:** Unmodified

**Constituents:** PBS (without Mg<sup>2+</sup> and Ca<sup>2+</sup>), pH 7.3 containing 50% glycerol, 0.5% BSA and 0.02% sodium azide

**Research Areas:** Immunology

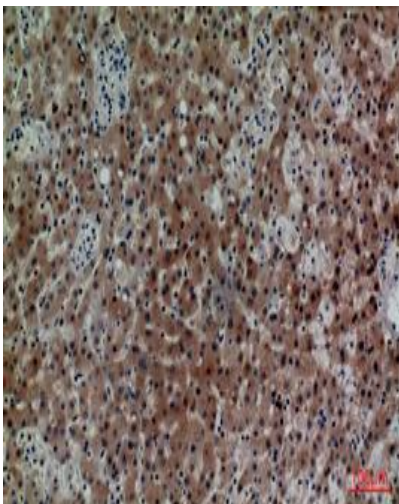
**Storage & Shipping:** Store at -20°C. Avoid repeated freezing and thawing



Immunohistochemistry analysis of paraffin-embedded Human muscle using CD7 antibody. High-pressure and temperature Sodium Citrate pH 6.0 was used for antigen retrieval.



Western blot analysis of CD7 in Sodium K562 lysates using CD7 antibody.



Immunohistochemistry analysis of paraffin-embedded Human liver using CD7 antibody. High-pressure and temperature Sodium Citrate pH 6.0 was used for antigen retrieval.