

CD8 ALPHA RABBIT MAB

Cat.#: N261738

Product Name: Anti-CD8 alpha Rabbit Monoclonal Antibody

Synonyms: CD8A; MAL; T-cell surface glycoprotein CD8 alpha chain; T-lymphocyte differentiation antigen T8/Leu-2; CD antigen CD8a

UNIPROT ID: P01732

Background: Identifies cytotoxic/suppressor T-cells that interact with MHC class I bearing targets. CD8 is thought to play a role in the process of T-cell mediated killing. CD8 alpha chains binds to class I MHC molecules alpha-3 domains.

Immunogen: A synthetic peptide of human CD8

Applications: WB,IHC-P

Recommended Dilutions: WB: 1/500-1/1000 IHC: 1/50-1/100

Host Species: Rabbit

Clonality: Rabbit Monoclonal

Clone ID: R09-8E7

MW: Calculated MW: 26 kDa; Observed MW: 29 kDa

Isotype: IgG

Purification: Affinity Purified

Species Reactivity: Human,Hamster

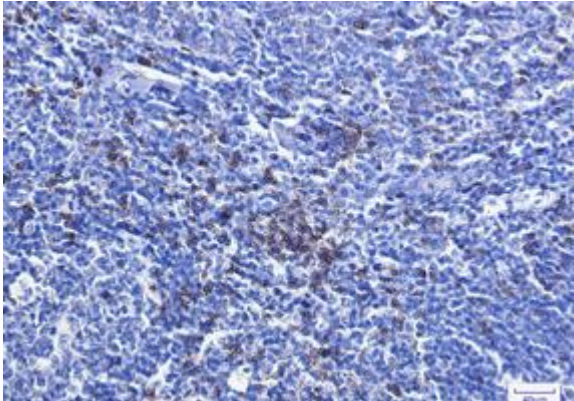
Conjugation: Unconjugated

Modification: Unmodified


Constituents: PBS (without Mg²⁺ and Ca²⁺), pH 7.3 containing 50% glycerol, 0.5% BSA and 0.02% sodium azide

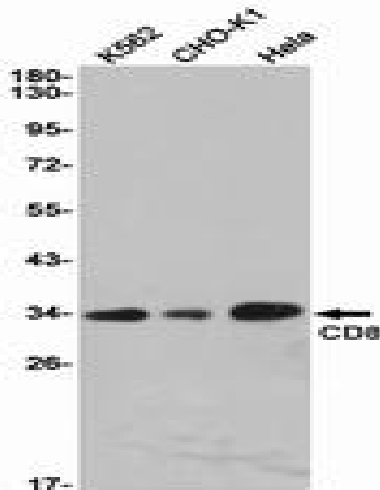
Research Areas: Immunology

Storage & Shipping: Store at -20°C. Avoid repeated freezing and thawing



Immunohistochemistry analysis of paraffin-embedded Human tonsil using CD8 antibody. High-pressure and temperature Sodium Citrate pH 6.0 was used for antigen retrieval.

 Western blot analysis of CD8 in THP-1 lysates using CD8 alpha antibody.



Western blot analysis of CD8 in K562, CHO-K1, HeLa lysates using CD8 antibody.