

CD8 ALPHA RABBIT PAB

Cat.#: N225649

Product Name: Anti-CD8 alpha Rabbit pAb

Synonyms: CD8A; MAL; T-cell surface glycoprotein CD8 alpha chain; T-lymphocyte differentiation antigen T8/Leu-2; CD antigen CD8a

UNIPROT ID: P01732

Background: Identifies cytotoxic/suppressor T-cells that interact with MHC class I bearing targets. CD8 is thought to play a role in the process of T-cell mediated killing. CD8 alpha chains binds to class I MHC molecules alpha-3 domains.

Immunogen: A synthesized peptide derived from human CD8

Applications: WB,IHC-P,ICC/IF

Recommended Dilutions: WB: 1/500-1/1000 IHC: 1/50-1/100 IF: 1/50-1/200

Host Species: Rabbit

Clonality: Rabbit Polyclonal

Clone ID: -

MW: Calculated MW: 26 kDa; Observed MW: 32 kDa

Isotype: IgG

Purification: Affinity Chromatography

Species Reactivity: Human

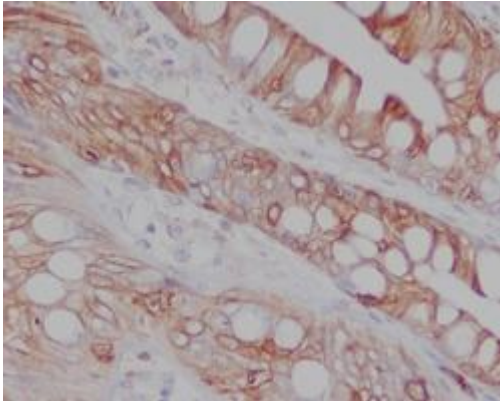
Conjugation: Unconjugated

Modification: Unmodified

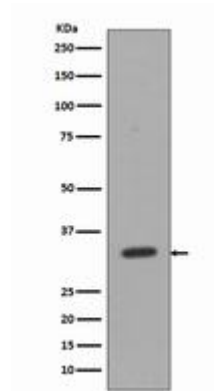
Constituents: PBS (without Mg²⁺ and Ca²⁺), pH 7.3 containing 50% glycerol, 0.5% BSA and 0.02% sodium azide

Research Areas: Immunology

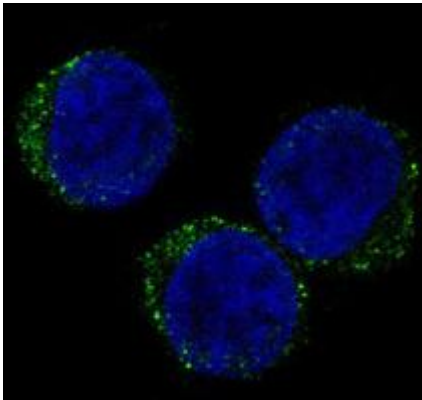
Storage & Shipping: Store at -20°C. Avoid repeated freezing and thawing



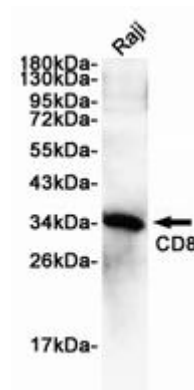
Immunohistochemistry analysis of paraffin-embedded Human colon using CD8 antibody. High-pressure and temperature Sodium Citrate pH 6.0 was used for antigen retrieval.



Western blot analysis of CD8 in Jurkat lysates using CD8 alpha antibody.



Immunofluorescence analysis of CD8 alpha in Jurkat using CD8 antibody.



Western blot analysis of CD8 alpha in Raji lysates using CD8 antibody.