

CD80 RABBIT PAB

Cat.#: N226067

Product Name: Anti-CD80 Rabbit pAb

Synonyms: CD80; CD28LG; CD28LG1; LAB7; T-lymphocyte activation antigen CD80; Activation B7-1 antigen; BBI; CTLA-4 counter-receptor B7.1; B7; CD antigen CD80

UNIPROT ID: P33681

Background: Expressed on activated B-cells, macrophages and dendritic cells. Involved in the costimulatory signal essential for T-lymphocyte activation. T-cell proliferation and cytokine production is induced by the binding of CD28 or CTLA-4 to this receptor.

Immunogen: A synthetic peptide of human CD80

Applications: WB,IHC-P

Recommended Dilutions: WB: 1/500-1/1000 IHC: 1/50-1/100

Host Species: Rabbit

Clonality: Rabbit Polyclonal

Clone ID: -

MW: Calculated MW: 33 kDa; Observed MW: 65 kDa

Isotype: IgG

Purification: Affinity Purified

Species Reactivity: Human

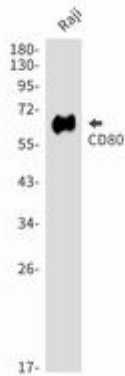
Conjugation: Unconjugated

Modification: Unmodified

Constituents: PBS (without Mg²⁺ and Ca²⁺), pH 7.3 containing 50% glycerol, 0.5% BSA and 0.02% sodium azide

Research Areas: Immunology

Storage & Shipping: Store at -20°C. Avoid repeated freezing and thawing



Western blot analysis of CD80 in Raji lysates using CD80 antibody.