

## CD85F RABBIT PAB

**Cat.#:** N225186

**Product Name:** Anti-CD85f Rabbit pAb

**Synonyms:** LILRA5; ILT11; LILRB7; LIR9; Leukocyte immunoglobulin-like receptor subfamily A member 5; CD85 antigen-like family member F; Immunoglobulin-like transcript 11; ILT-11; Leukocyte immunoglobulin-like receptor 9; LIR-9; CD85f

**UNIPROT ID:** A6NI73

**Background:** May play a role in triggering innate immune responses.

**Immunogen:** The antiserum was produced against synthesized peptide derived from the Internal region of human LILRA5. AA range:141-190

**Applications:** WB,ELISA

**Recommended Dilutions:** WB: 1/500-1/1000 ELISA: 1/10000

**Host Species:** Rabbit

**Clonality:** Rabbit Polyclonal

**Clone ID:** -

**MW:** Calculated MW: 33 kDa; Observed MW: 33 kDa

**Isotype:** IgG

**Purification:** Affinity Purified

**Species Reactivity:** Human

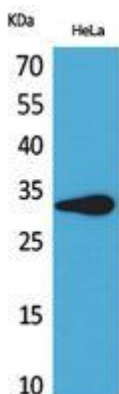
**Conjugation:** Unconjugated

**Modification:** Unmodified

**Constituents:** PBS (without Mg<sup>2+</sup> and Ca<sup>2+</sup>), pH 7.3 containing 50% glycerol, 0.5% BSA and 0.02% sodium azide

**Research Areas:** Immunology

**Storage & Shipping:** Store at -20°C. Avoid repeated freezing and thawing



Western blot analysis of CD85f in HeLa lysates using CD85f antibody.



# Product Description

Pioneering GTPase and Oncogene Product Development since 2010

---