

CD86 RABBIT PAB

Cat.#: S218448

Product Name: Anti-CD86 Rabbit Polyclonal Antibody

Synonyms: B70; B7-2; B7.2; LAB72; CD28LG2

UNIPROT ID: P42081 (Gene Accession - BC040261)

Background: This gene encodes a type I membrane protein that is a member of the immunoglobulin superfamily. This protein is expressed by antigen-presenting cells, and it is the ligand for two proteins at the cell surface of T cells, CD28 antigen and cytotoxic T-lymphocyte-associated protein 4. Binding of this protein with CD28 antigen is a costimulatory signal for activation of the T-cell. Binding of this protein with cytotoxic T-lymphocyte-associated protein 4 negatively regulates T-cell activation and diminishes the immune response. Alternative splicing results in several transcript variants encoding different isoforms.

Immunogen: Fusion protein of human CD86

Applications: ELISA, WB, IHC

Recommended Dilutions: IHC: 25-100;WB: 500-2000;ELISA: 5000-10000

Host Species: Rabbit

Clonality: Rabbit Polyclonal

Isotype: Immunogen-specific rabbit IgG

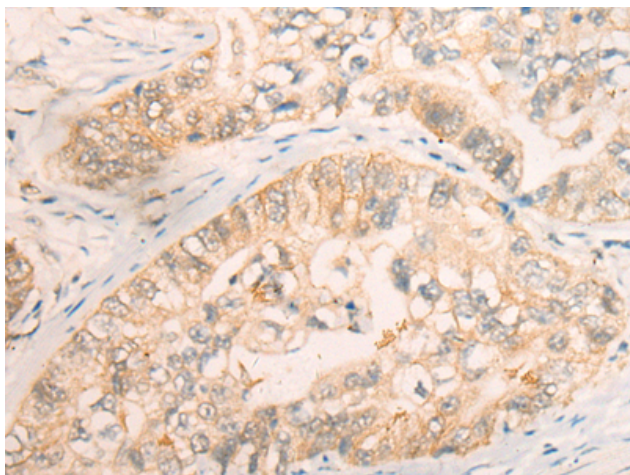
Purification: Antigen affinity purification

Species Reactivity: Human

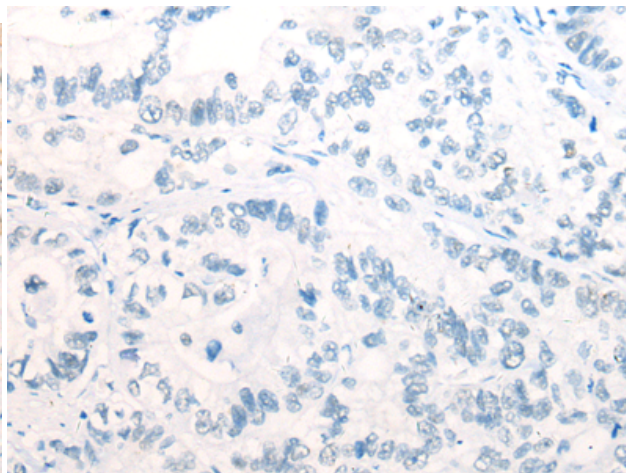
Constituents: PBS (without Mg²⁺ and Ca²⁺), pH 7.4, 150 mM NaCl, 0.05% Sodium Azide and 40% glycerol

Research Areas: Immunology, Stem Cells

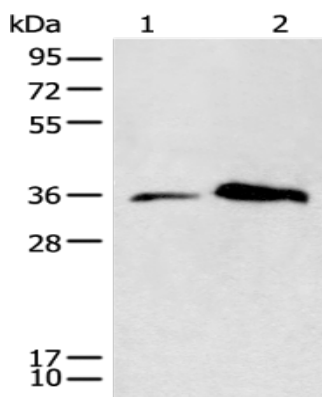
Storage & Shipping: Store at -20°C. Avoid repeated freezing and thawing



Immunohistochemistry analysis of paraffin embedded Human gastric cancer tissue using 218448(CD86 Antibody) at a dilution of 1/30(Cytoplasm and Cell membrane).



In comparison with the IHC on the left, the same paraffin-embedded Human gastric cancer tissue is first treated with the fusion protein and then with 218448(Anti-CD86 Antibody) at dilution 1/30.



Gel: 12%SDS-PAGE, Lysate: 40 μ g;
Lane 1-2: Human lymph gland tissue and Jurkat cell lysates;
Primary antibody: 218448(CD86 Antibody) at dilution 1/450;
Secondary antibody: Goat anti rabbit IgG at 1/8000 dilution;
Exposure time: 1 minute