

CDA RABBIT MAB

Cat.#: N262009

Product Name: Anti-CDA Rabbit Monoclonal Antibody

Synonyms: cytidine deaminase; CDD

UNIPROT ID: P32320

Background: This enzyme scavenges exogenous and endogenous cytidine and 2'-deoxycytidine for UMP synthesis.

Immunogen: Recombinant protein of human CDA

Applications: WB,IHC-P

Recommended Dilutions: WB: 1/500-1/1000 IHC: 1/50-1/100

Host Species: Rabbit

Clonality: Rabbit Monoclonal

Clone ID: R08-4C9

MW: Calculated MW: 16 kDa; Observed MW: 16 kDa

Isotype: IgG

Purification: Affinity Purified

Species Reactivity: Human

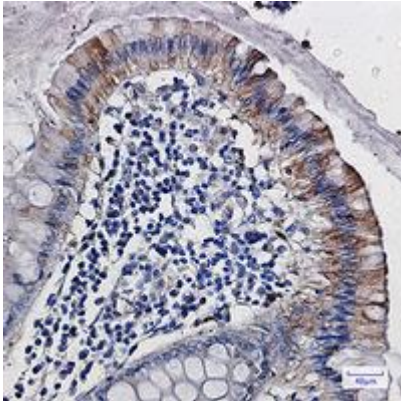
Conjugation: Unconjugated

Modification: Unmodified

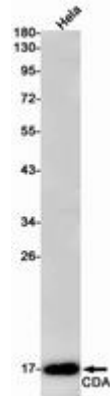
Constituents: PBS (without Mg²⁺ and Ca²⁺), pH 7.3 containing 50% glycerol, 0.5% BSA and 0.02% sodium azide

Research Areas: Epigenetics and Nuclear Signaling

Storage & Shipping: Store at -20°C. Avoid repeated freezing and thawing



Immunohistochemistry analysis of paraffin-embedded Human colon cancer using CDA antibody. High-pressure and temperature Sodium Citrate pH 6.0 was used for antigen retrieval.



Western blot analysis of CDA in Sodium Hela lysates using CDA antibody.