

CDADC1 RABBIT PAB

Cat.#: S218452

Product Name: Anti-CDADC1 Rabbit Polyclonal Antibody

Synonyms: NYD-SP15; bA103J18.1

UNIPROT ID: Q9BWW3 (Gene Accession - BC009562)

Background: Enables several functions, including cytidine deaminase activity; importin-alpha family protein binding activity; and protein homodimerization activity. Involved in DNA cytosine deamination and cytidine deamination. Located in cytoplasm and nucleus.

Immunogen: Fusion protein of human CDADC1

Applications: ELISA, WB, IHC

Recommended Dilutions: IHC: 100-300;WB: 500-2000;ELISA: 5000-10000

Host Species: Rabbit

Clonality: Rabbit Polyclonal

Isotype: Immunogen-specific rabbit IgG

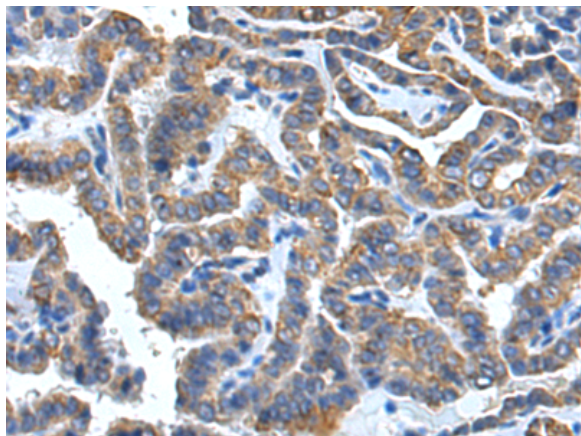
Purification: Antigen affinity purification

Species Reactivity: Human

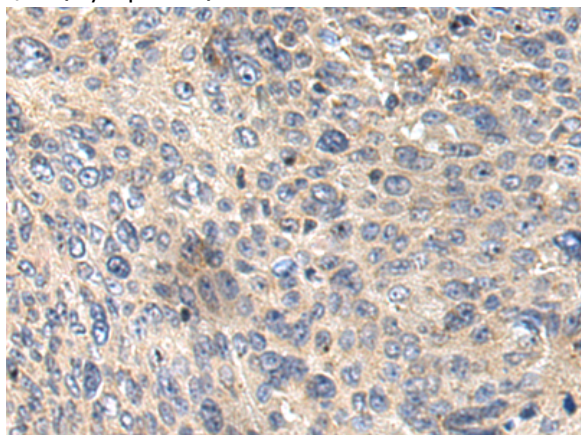
Constituents: PBS (without Mg²⁺ and Ca²⁺), pH 7.4, 150 mM NaCl, 0.05% Sodium Azide and 40% glycerol

Research Areas: Metabolism

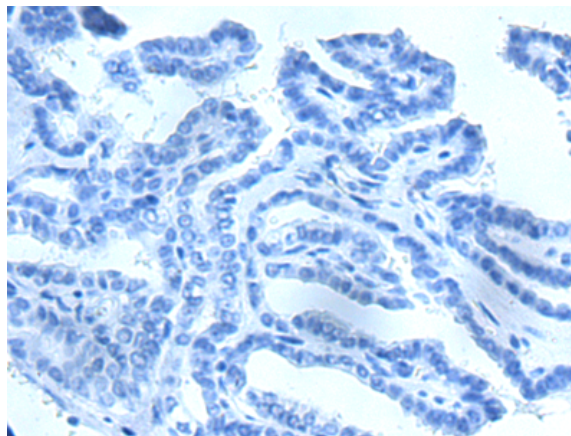
Storage & Shipping: Store at -20°C. Avoid repeated freezing and thawing



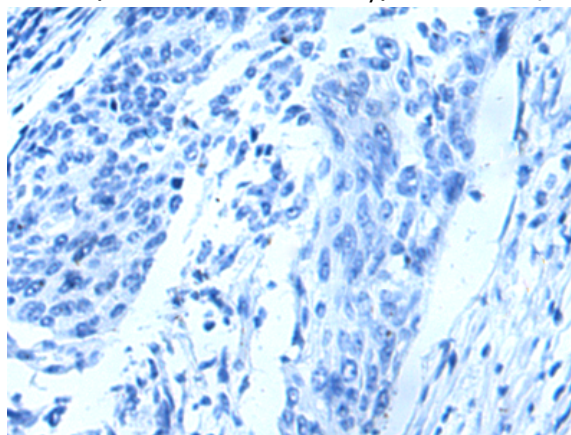
Immunohistochemistry analysis of paraffin embedded Human thyroid cancer tissue using 218452(CDADC1 Antibody) at a dilution of 1/110(Cytoplasm).



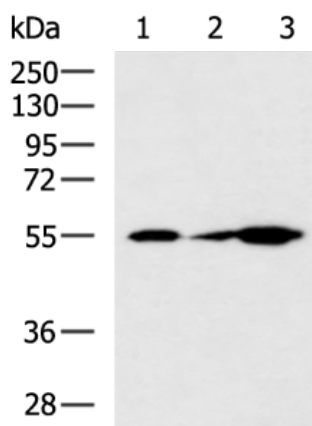
The image on the left is immunohistochemistry of paraffin-embedded Human cervical cancer tissue using 218452(Anti-CDADC1 Antibody) at a dilution of 1/110.



In comparison with the IHC on the left, the same paraffin-embedded Human thyroid cancer tissue is first treated with the fusion protein and then with 218452(Anti-CDADC1 Antibody) at dilution 1/110.



In comparison with the IHC on the left, the same paraffin-embedded Human cervical cancer tissue is first treated with fusion protein and then with D224483(Anti-CDADC1 Antibody) at dilution 1/110.



Gel: 8%SDS-PAGE, Lysate: 40 µg;
 Lane 1-3: Human heart tissue, SP20 cell, Mouse heart tissue lysates;
 Primary antibody: 218452(CDADC1 Antibody) at dilution 1/700;
 Secondary antibody: HRP-conjugated Goat anti rabbit IgG at 1/5000 dilution;
 Exposure time: 2 minutes



Product Description

Pioneering GTPase and Oncogene Product Development since 2010
