

CDC123 RABBIT MAB

Cat.#: N263261

Product Name: Anti-CDC123 Rabbit Monoclonal Antibody

Synonyms: C10orf7; CDC123; Cell division cycle 123; D123; HT 1080; PZ32

UNIPROT ID: O75794

Background: Required for S phase entry of the cell cycle.

Immunogen: A synthetic peptide of human CDC123

Applications: WB,IP

Recommended Dilutions: WB: 1/500-1/1000 IP: 1/20

Host Species: Rabbit

Clonality: Rabbit Monoclonal

Clone ID: R06-8B6

MW: Calculated MW: 39 kDa; Observed MW: 39 kDa

Isotype: IgG

Purification: Affinity Purified

Species Reactivity: Human

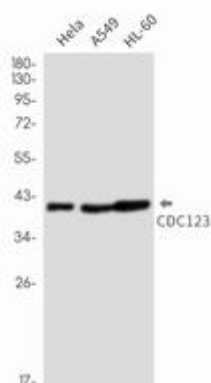
Conjugation: Unconjugated

Modification: Unmodified

Constituents: PBS (without Mg²⁺ and Ca²⁺), pH 7.3 containing 50% glycerol, 0.5% BSA and 0.02% sodium azide

Research Areas: Cell Biology

Storage & Shipping: Store at -20°C. Avoid repeated freezing and thawing



Western blot analysis of CDC123 in Hela, A549, HL-60 lysates using CDC123 antibody.