

CDC20 RABBIT PAB

Cat.#: S219149

Product Name: Anti-CDC20 Rabbit Polyclonal Antibody

Synonyms: CDC20A; p55CDC; bA276H19.3

UNIPROT ID: Q12834 (Gene Accession - BC000624)

Background: CDC20 appears to act as a regulatory protein interacting with several other proteins at multiple points in the cell cycle. It is required for two microtubule-dependent processes, nuclear movement prior to anaphase and chromosome separation.

Immunogen: Fusion protein of human CDC20

Applications: ELISA, IHC

Recommended Dilutions: IHC: 70-350; ELISA: 5000-10000

Host Species: Rabbit

Clonality: Rabbit Polyclonal

Isotype: Immunogen-specific rabbit IgG

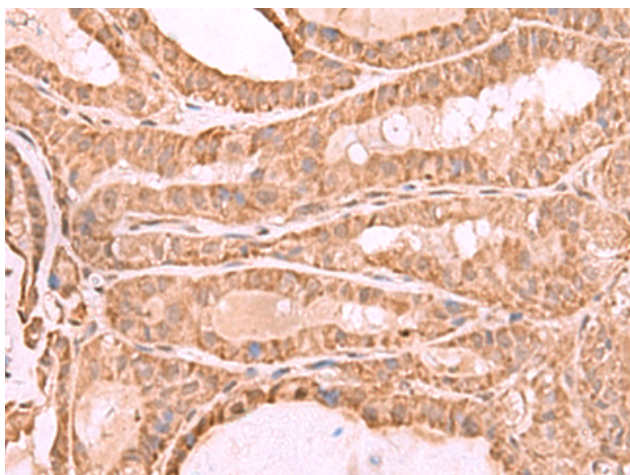
Purification: Antigen affinity purification

Species Reactivity: Human, Mouse, Rat

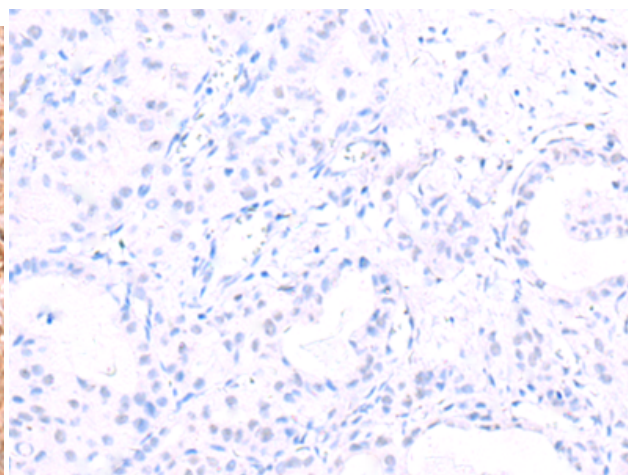
Constituents: PBS (without Mg²⁺ and Ca²⁺), pH 7.4, 150 mM NaCl, 0.05% Sodium Azide and 40% glycerol

Research Areas: Cell Biology

Storage & Shipping: Store at -20°C. Avoid repeated freezing and thawing



Immunohistochemistry analysis of paraffin embedded Human thyroid cancer tissue using 219149 (CDC20 Antibody) at a dilution of 1/70 (Cytoplasm and Nucleus).



In comparison with the IHC on the left, the same paraffin-embedded Human thyroid cancer tissue is first treated with the fusion protein and then with 219149 (Anti-CDC20 Antibody) at dilution 1/70.