

## CDC34 RABBIT PAB

**Cat.#:** S220449

**Product Name:** Anti-CDC34 Rabbit Polyclonal Antibody

**Synonyms:** UBC3; UBCH3; UBE2R1; E2-CDC34

**UNIPROT ID:** P49427 (Gene Accession - NP\_004350 )

**Background:** The protein encoded by this gene is a member of the ubiquitin-conjugating enzyme family. Ubiquitin-conjugating enzyme catalyzes the covalent attachment of ubiquitin to other proteins. This protein is a part of the large multiprotein complex which is required for ubiquitin-mediated degradation of cell cycle G1 regulators, and for the initiation of DNA replication.

**Immunogen:** Synthetic peptide of human CDC34

**Applications:** ELISA, WB, IHC

**Recommended Dilutions:** IHC: 100-300;WB: 500-2000;ELISA: 2000-10000

**Host Species:** Rabbit

**Clonality:** Rabbit Polyclonal

**Isotype:** Immunogen-specific rabbit IgG

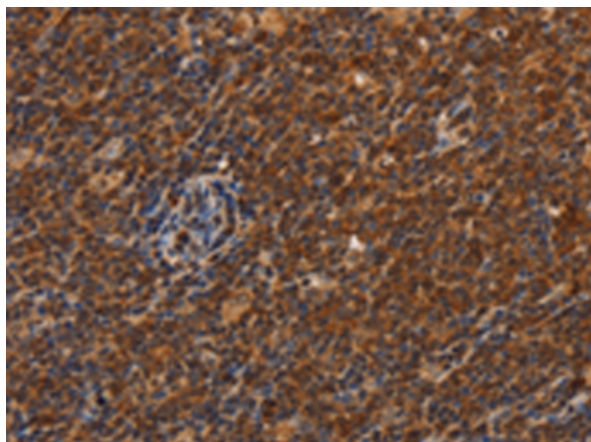
**Purification:** Antigen affinity purification

**Species Reactivity:** Human, Mouse

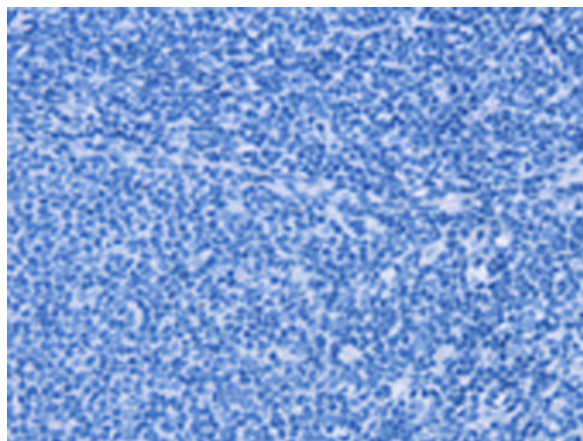
**Constituents:** PBS (without Mg<sup>2+</sup> and Ca<sup>2+</sup>), pH 7.4, 150 mM NaCl, 0.05% Sodium Azide and 40% glycerol

**Research Areas:** Epigenetics and Nuclear Signaling

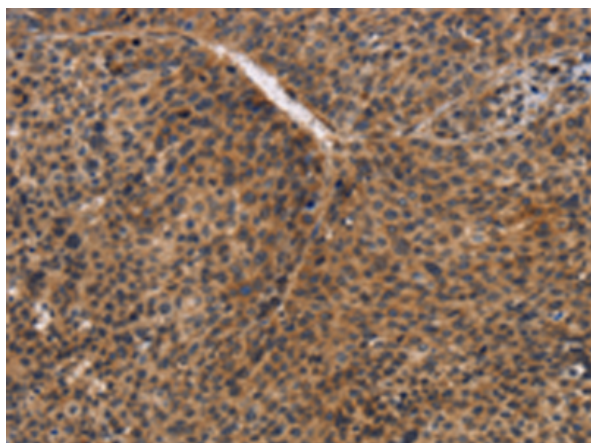
**Storage & Shipping:** Store at -20°C. Avoid repeated freezing and thawing



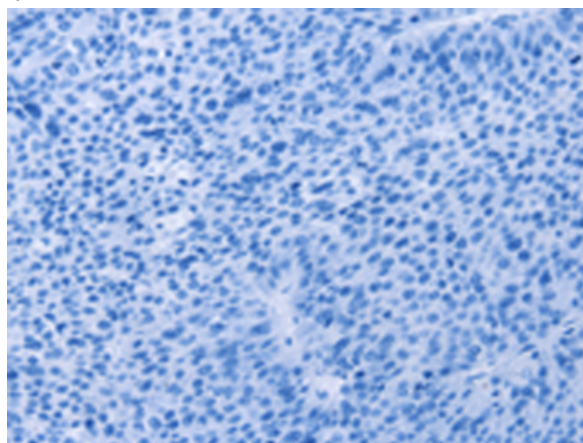
Immunohistochemistry analysis of paraffin embedded Human Lymphoma tissue using 220449(CDC34 Antibody) at a dilution of 1/50(Cytoplasm).



In comparison with the IHC on the left, the same paraffin-embedded Human Lymphoma tissue is first treated with the synthetic peptide and then with 220449(Anti-CDC34 Antibody) at dilution 1/50.



The image on the left is immunohistochemistry of paraffin-embedded Human liver cancer tissue using 220449(Anti-CDC34 Antibody) at a dilution of 1/50.



In comparison with the IHC on the left, the same paraffin-embedded Human liver cancer tissue is first treated with synthetic peptide and then with D261544(Anti-CDC34 Antibody) at dilution 1/50.



Gel: 15%SDS-PAGE, Lysate: 40 µg;  
Lane 1-2: HeLa cells, A431 cells;  
Primary antibody: 220449(CDC34 Antibody) at dilution 1/900;  
Secondary antibody: Goat anti rabbit IgG at 1/8000 dilution;  
Exposure time: 1 minute



# Product Description

Pioneering GTPase and Oncogene Product Development since 2010

---