

## CDC7 RABBIT MAB

**Cat.#:** N262013

**Product Name:** Anti-CDC7 Rabbit Monoclonal Antibody

**Synonyms:** Cell division cycle 7-related protein kinase; EC 2.7.11.1; CDC7-related kinase; HsCdc7; huCdc7; CDC7; CDC7L1; Hsk1; CDC7 kinase

**UNIPROT ID:** O00311

**Background:** DNA replication in eukaryotic cells is dependent on the phosphorylation of the pre-replicative complex (preRC) at the origin of replication. Two complexes of proteins mediate this event, the cyclin dependent kinase (CDK) complex, and the Cdc7 kinase-ASK complex. Human Cdc7 kinase consists of 574 amino acids with a molecular weight of 55 kDa. The activity of Cdc7 kinase oscillates during cell cycle. The major targets of Cdc7 kinase are proteins that belong to the MCM complex (mini chromosome maintenance proteins).

**Immunogen:** Recombinant protein of human CDC7

**Applications:** WB,IP

**Recommended Dilutions:** WB: 1/500-1/1000 IP: 1/20

**Host Species:** Rabbit

**Clonality:** Rabbit Monoclonal

**Clone ID:** R01-4G6

**MW:** Calculated MW: 64 kDa; Observed MW: 64 kDa

**Isotype:** IgG

**Purification:** Affinity Purified

**Species Reactivity:** Human,Hamster

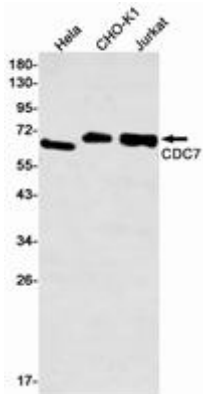
**Conjugation:** Unconjugated

**Modification:** Unmodified

**Constituents:** PBS (without Mg<sup>2+</sup> and Ca<sup>2+</sup>), pH 7.3 containing 50% glycerol, 0.5% BSA and 0.02% sodium azide

**Research Areas:** Cell Biology

**Storage & Shipping:** Store at -20°C. Avoid repeated freezing and thawing



Western blot analysis of CDC7 in HeLa, CHO-K1, Jurkat lysates using CDC7 antibody.