

## CDHR4 RABBIT PAB

**Cat.#:** S218106

**Product Name:** Anti-CDHR4 Rabbit Polyclonal Antibody

**Synonyms:** CDH29; PRO34300

**UNIPROT ID:** A6H8M9 (Gene Accession - BC132756 )

**Background:** Cadherins are calcium-dependent cell adhesion proteins. They preferentially interact with themselves in a homophilic manner in connecting cells; cadherins may thus contribute to the sorting of heterogeneous cell types (By similarity).

**Immunogen:** Fusion protein of human CDHR4

**Applications:** ELISA, WB, IHC

**Recommended Dilutions:** IHC: 20-100;WB: 200-1000;ELISA: 5000-10000

**Host Species:** Rabbit

**Clonality:** Rabbit Polyclonal

**Isotype:** Immunogen-specific rabbit IgG

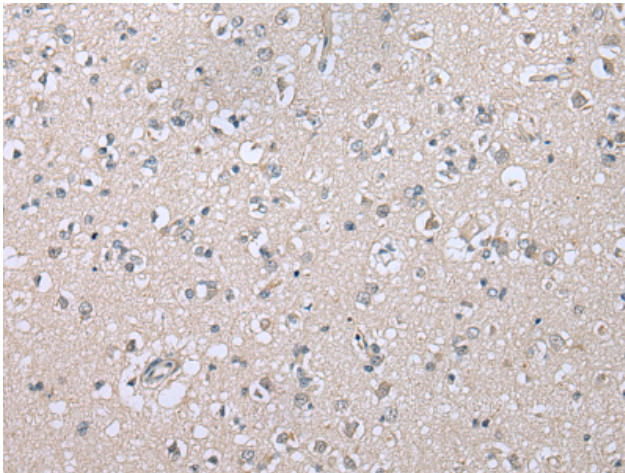
**Purification:** Antigen affinity purification

**Species Reactivity:** Human, Mouse

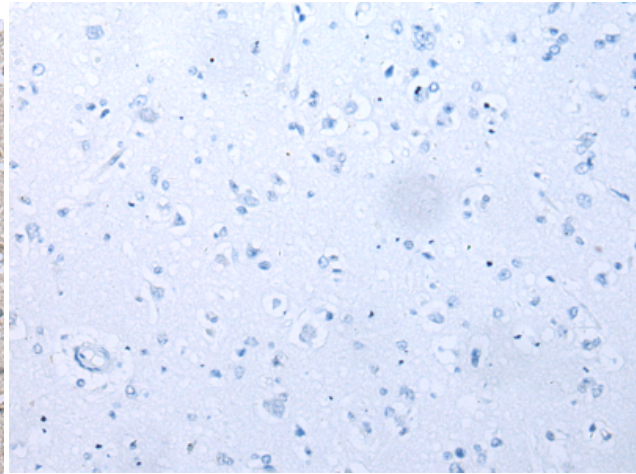
**Constituents:** PBS (without Mg<sup>2+</sup> and Ca<sup>2+</sup>), pH 7.4, 150 mM NaCl, 0.05% Sodium Azide and 40% glycerol

**Research Areas:** Signal Transduction

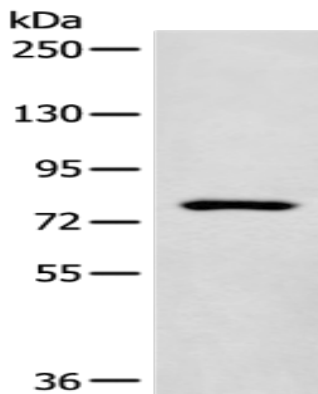
**Storage & Shipping:** Store at -20°C. Avoid repeated freezing and thawing



Immunohistochemistry analysis of paraffin embedded Human brain tissue using 218106(CDHR4 Antibody) at a dilution of 1/25(Cytoplasm).



In comparison with the IHC on the left, the same paraffin-embedded Human brain tissue is first treated with the fusion protein and then with 218106(Anti-CDHR4 Antibody) at dilution 1/25.



Gel: 6%SDS-PAGE, Lysate: 40  $\mu$ g;  
Lane: Mouse lung tissue lysate;  
Primary antibody: 218106(CDHR4 Antibody) at dilution 1/300;  
Secondary antibody: Goat anti rabbit IgG at 1/8000 dilution;  
Exposure time: 1 minute