

## CDK10 RABBIT PAB

**Cat.#:** S216412

**Product Name:** Anti-CDK10 Rabbit Polyclonal Antibody

**Synonyms:** ALSAS; PISSLRE

**UNIPROT ID:** Q15131 (Gene Accession - BC025301 )

**Background:** The protein encoded by this gene belongs to the CDK subfamily of the Ser/Thr protein kinase family. The CDK subfamily members are highly similar to the gene products of *S. cerevisiae cdc28*, and *S. pombe cdc2*, and are known to be essential for cell cycle progression. This kinase has been shown to play a role in cellular proliferation and its function is limited to cell cycle G2-M phase. Multiple transcript variants encoding different isoforms have been found for this gene.

**Immunogen:** Fusion protein of human CDK10

**Applications:** ELISA, WB, IHC

**Recommended Dilutions:** IHC: 100-200;WB: 1000-5000;ELISA: 5000-10000

**Host Species:** Rabbit

**Clonality:** Rabbit Polyclonal

**Isotype:** Immunogen-specific rabbit IgG

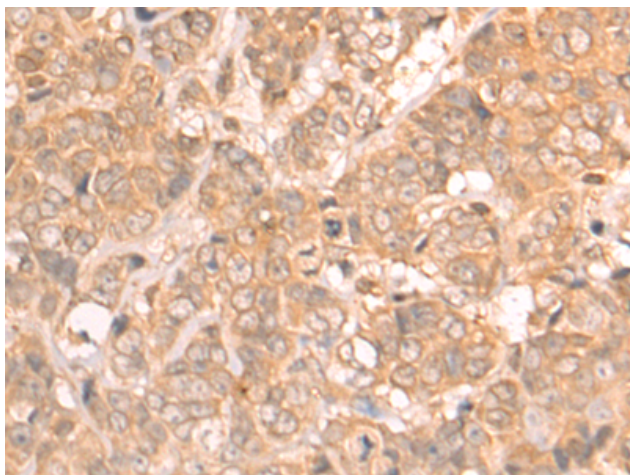
**Purification:** Antigen affinity purification

**Species Reactivity:** Human, Mouse, Rat

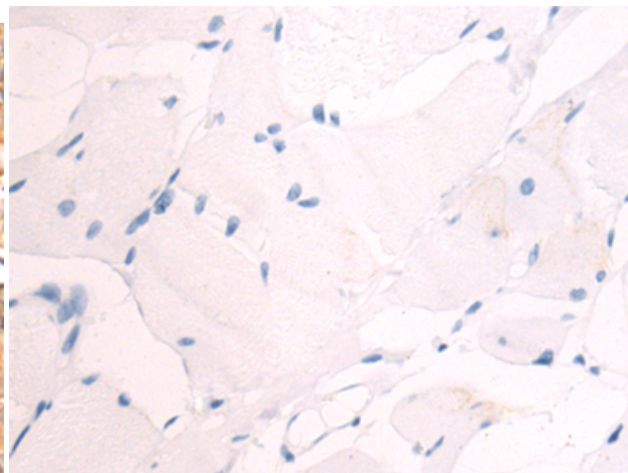
**Constituents:** PBS (without Mg<sup>2+</sup> and Ca<sup>2+</sup>), pH 7.4, 150 mM NaCl, 0.05% Sodium Azide and 40% glycerol

**Research Areas:** Epigenetics and Nuclear Signaling, Cancer

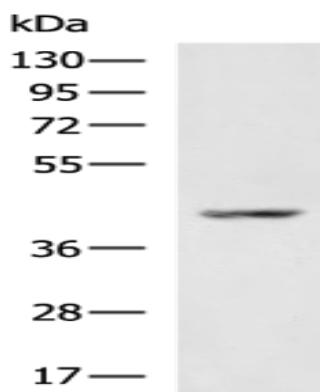
**Storage & Shipping:** Store at -20°C. Avoid repeated freezing and thawing



Immunohistochemistry analysis of paraffin embedded Human breast cancer tissue using 216412(CDK10 Antibody) at a dilution of 1/75(Cytoplasm).



In comparison with the IHC on the left, the same paraffin-embedded Human breast cancer tissue is first treated with the fusion protein and then with 216412(Anti-CDK10 Antibody) at dilution 1/75.



Gel: 8%SDS-PAGE, Lysate: 40  $\mu$ g;  
Lane: Human small cell malignant tumors (lymphoma) tissue lysate;  
Primary antibody: 216412(CDK10 Antibody) at dilution 1/1000;  
Secondary antibody: HRP-conjugated Goat anti rabbit IgG at 1/5000 dilution;  
Exposure time: 10 seconds