

CDK2 RABBIT MAB

Cat.#: N261559

Product Name: Anti-CDK2 Rabbit Monoclonal Antibody

Synonyms: CDK2; CDKN2; Cyclin-dependent kinase 2; Cell division protein kinase 2; p33 protein kinase

UNIPROT ID: P24941

Background: The protein encoded by this gene is a member of the Ser/Thr protein kinase family. This protein is a catalytic subunit of the highly conserved protein kinase complex known as M-phase promoting factor (MPF), which is essential for G1/S and G2/M phase transitions of eukaryotic cell cycle.

Immunogen: A synthetic peptide of human Cdk2

Applications: WB,IHC-F,IHC-P,ICC/IF,IP

Recommended Dilutions: WB: 1/500-1/1000 IHC: 1/50-1/100 IF: 1/50-1/200 IP: 1/20

Host Species: Rabbit

Clonality: Rabbit Monoclonal

Clone ID: R04-1D5

MW: Calculated MW: 34 kDa; Observed MW: 34 kDa

Isotype: IgG

Purification: Affinity Purified

Species Reactivity: Human,Rat,Hamster

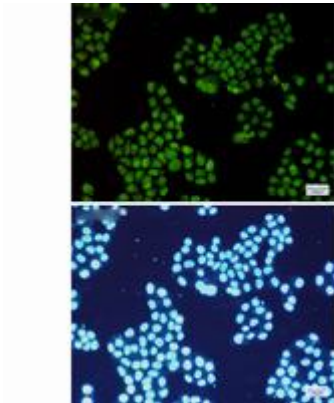
Conjugation: Unconjugated

Modification: Unmodified

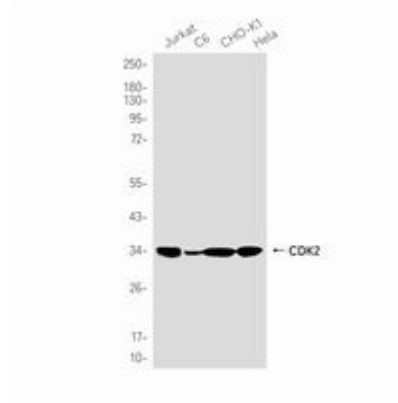
Constituents: PBS (without Mg²⁺ and Ca²⁺), pH 7.3 containing 50% glycerol, 0.5% BSA and 0.02% sodium azide

Research Areas: Cell Biology

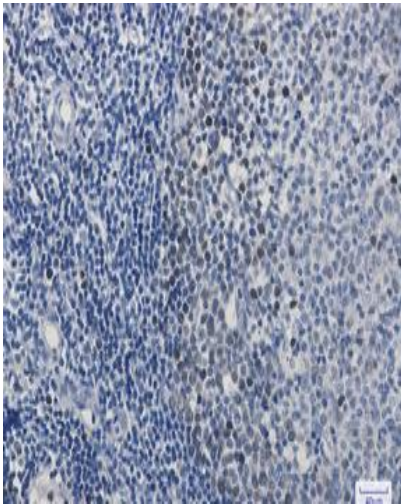
Storage & Shipping: Store at -20°C. Avoid repeated freezing and thawing



Immunocytochemistry analysis of CDK2 (green) in HeLa using CDK2 antibody, and DAPI (blue)



Western blot analysis of CDK2 in Jurkat, C6, CHO-K1, HeLa lysates using CDK2 antibody.



Immunohistochemistry analysis of paraffin-embedded Human tonsil using Cdk2 antibody. High-pressure and temperature Sodium Citrate pH 6.0 was used for antigen retrieval.