

CDK5 RABBIT PAB

Cat.#: S216410

Product Name: Anti-CDK5 Rabbit Polyclonal Antibody

Synonyms: LIS7; PSSALRE

UNIPROT ID: Q00535 (Gene Accession - BC005115)

Background: This gene encodes a proline-directed serine/threonine kinase that is a member of the cyclin-dependent kinase family of proteins. Unlike other members of the family, the protein encoded by this gene does not directly control cell cycle regulation. Instead the protein, which is predominantly expressed at high levels in mammalian postmitotic central nervous system neurons, functions in diverse processes such as synaptic plasticity and neuronal migration through phosphorylation of proteins required for cytoskeletal organization, endocytosis and exocytosis, and apoptosis. In humans, an allelic variant of the gene that results in undetectable levels of the protein has been associated with lethal autosomal recessive lissencephaly-7. Alternative splicing results in multiple transcript variants.

Immunogen: Fusion protein of human CDK5

Applications: ELISA, WB, IHC

Recommended Dilutions: IHC: 50-200;WB: 1000-5000;ELISA: 5000-10000

Host Species: Rabbit

Clonality: Rabbit Polyclonal

Isotype: Immunogen-specific rabbit IgG

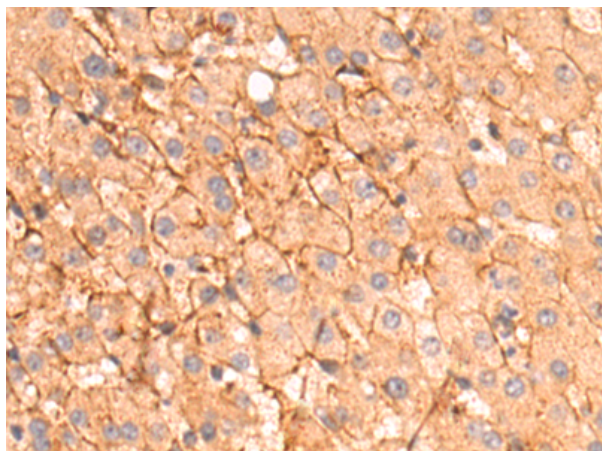
Purification: Antigen affinity purification

Species Reactivity: Human, Mouse, Rat

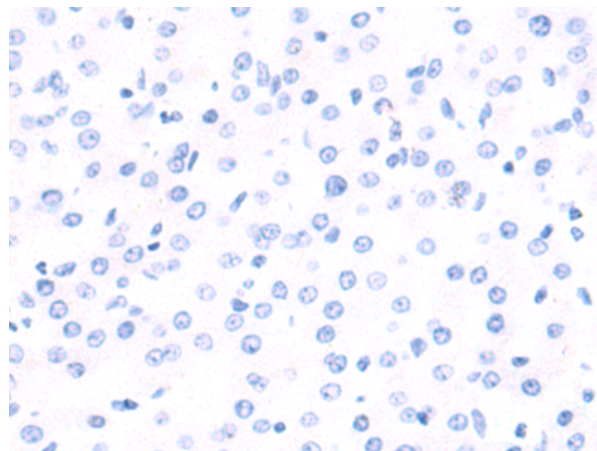
Constituents: PBS (without Mg²⁺ and Ca²⁺), pH 7.4, 150 mM NaCl, 0.05% Sodium Azide and 40% glycerol

Research Areas: Cancer, Metabolism, Neuroscience

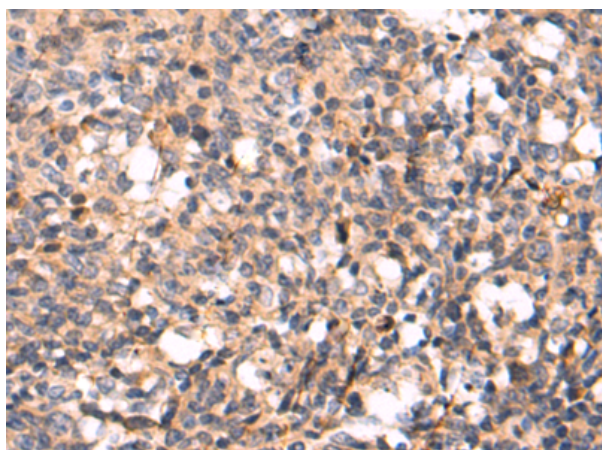
Storage & Shipping: Store at -20°C. Avoid repeated freezing and thawing



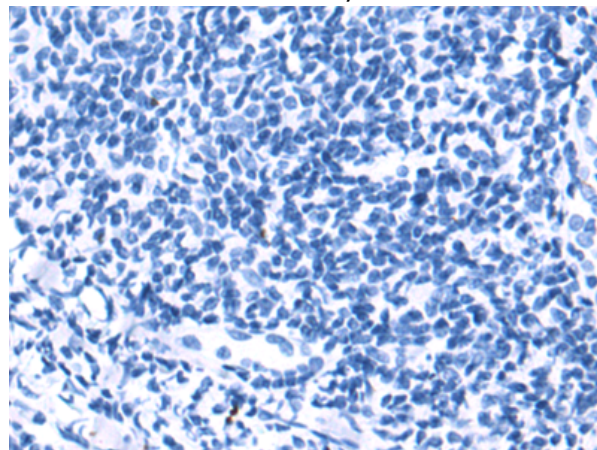
Immunohistochemistry analysis of paraffin embedded Human liver cancer tissue using 216410(CDK5 Antibody) at a dilution of 1/80(Cytoplasm).



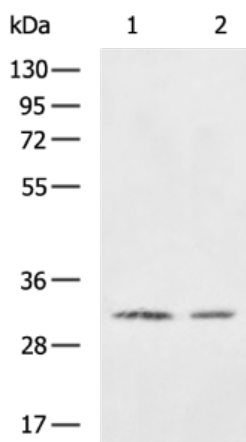
In comparison with the IHC on the left, the same paraffin-embedded Human liver cancer tissue is first treated with the fusion protein and then with 216410(Anti-CDK5 Antibody) at dilution 1/80.



The image on the left is immunohistochemistry of paraffin-embedded Human tonsil tissue using 216410(Anti-CDK5 Antibody) at a dilution of 1/80.



In comparison with the IHC on the left, the same paraffin-embedded Human tonsil tissue is first treated with fusion protein and then with D220397(Anti-CDK5 Antibody) at dilution 1/80.



Gel: 8%SDS-PAGE, Lysate: 40 µg;
 Lane 1-2: K562 and HT-29 cell lysates;
 Primary antibody: 216410(CDK5 Antibody) at dilution 1/1200;
 Secondary antibody: HRP-conjugated Goat anti rabbit IgG at 1/5000 dilution;
 Exposure time: 5 seconds



Product Description

Pioneering GTPase and Oncogene Product Development since 2010
