

CDK6 RABBIT MAB

Cat.#: N262019

Product Name: Anti-CDK6 Rabbit Monoclonal Antibody

Synonyms: CDK 6; Cell division protein kinase 6; Crk 2; Cyclin dependent kinase 6; p40; PLSTIRE; STQTL11

UNIPROT ID: Q00534

Background: The cyclin-dependent kinases form complexes with their cyclin partners and with CDK inhibitors. CDK6 and CDK4 associate with the D-type cyclins and target the retinoblastoma protein, allowing passage through the G1/S phase restriction point.

Immunogen: A synthetic peptide of human Cdk6

Applications: WB, ICC/IF

Recommended Dilutions: WB: 1/500-1/1000 IF: 1/50-1/200

Host Species: Rabbit

Clonality: Rabbit Monoclonal

Clone ID: R03-2G5

MW: Calculated MW: 37 kDa; Observed MW: 37 kDa

Isotype: IgG

Purification: Affinity Purified

Species Reactivity: Human

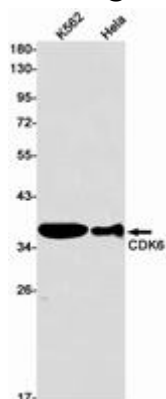
Conjugation: Unconjugated

Modification: Unmodified

Constituents: PBS (without Mg²⁺ and Ca²⁺), pH 7.3 containing 50% glycerol, 0.5% BSA and 0.02% sodium azide

Research Areas: Signal Transduction

Storage & Shipping: Store at -20°C. Avoid repeated freezing and thawing



Western blot analysis of CDK6 in K562, HeLa lysates using CDK6 antibody.



Product Description

Pioneering GTPase and Oncogene Product Development since 2010
