

CDK8 RABBIT PAB

Cat.#: S214961

Product Name: Anti-CDK8 Rabbit Polyclonal Antibody

Synonyms: K35; IDDHBA

UNIPROT ID: P49336 (Gene Accession - NP_001251)

Background: This gene encodes a member of the cyclin-dependent protein kinase (CDK) family. CDK family members are known to be important regulators of cell cycle progression. This kinase and its regulatory subunit, cyclin C, are components of the Mediator transcriptional regulatory complex, involved in both transcriptional activation and repression by phosphorylation of the carboxy-terminal domain of the largest subunit of RNA polymerase II. This kinase regulates transcription by targeting the cyclin-dependent kinase 7 subunits of the general transcription initiation factor IIH, thus providing a link between the Mediator complex and the basal transcription machinery. Multiple pseudogenes of this gene have been identified. Alternative splicing results in multiple transcript variants.

Immunogen: Synthetic peptide of human CDK8

Applications: ELISA, IHC

Recommended Dilutions: IHC: 50-200; ELISA: 5000-10000

Host Species: Rabbit

Clonality: Rabbit Polyclonal

Isotype: Immunogen-specific rabbit IgG

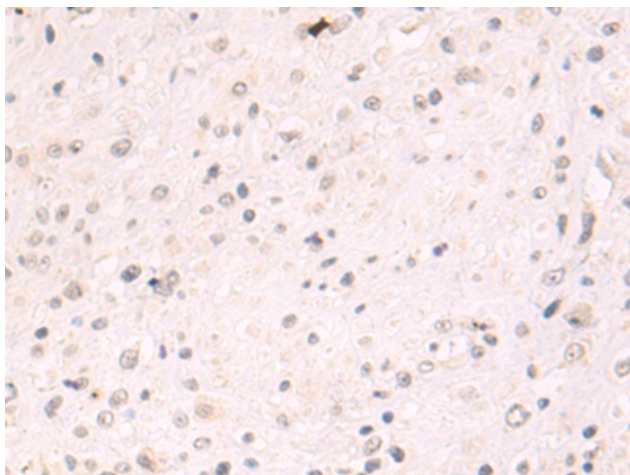
Purification: Antigen affinity purification

Species Reactivity: Human, Mouse

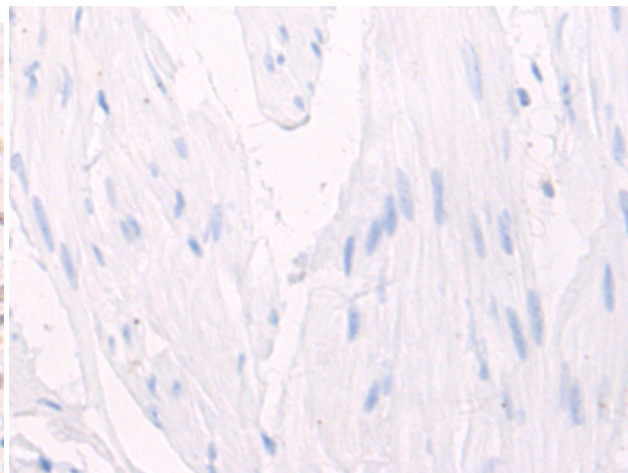
Constituents: PBS (without Mg²⁺ and Ca²⁺), pH 7.4, 150 mM NaCl, 0.05% Sodium Azide and 40% glycerol

Research Areas: Epigenetics and Nuclear Signaling, Cancer

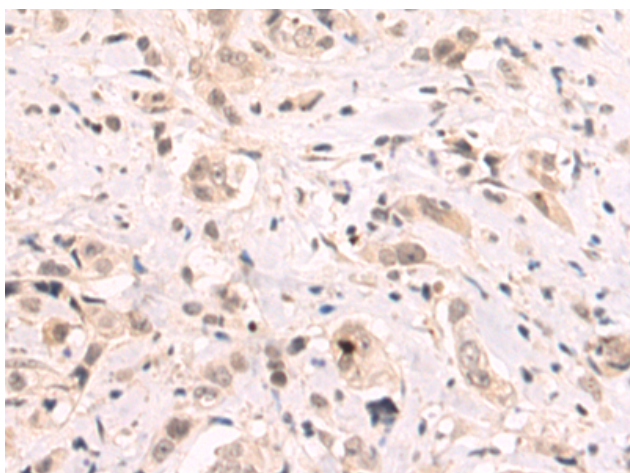
Storage & Shipping: Store at -20°C. Avoid repeated freezing and thawing



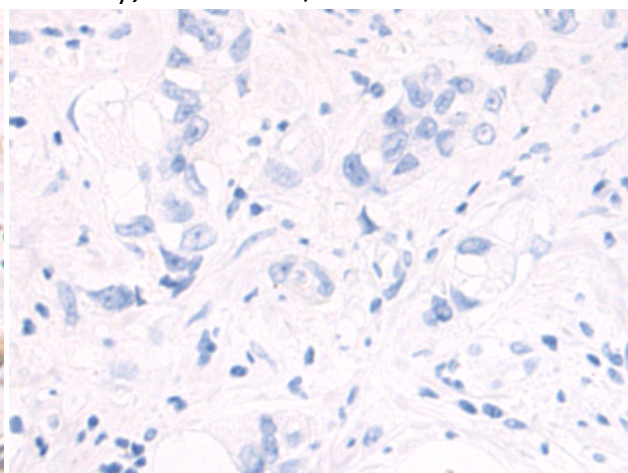
Immunohistochemistry analysis of paraffin embedded Human prostate cancer tissue using 214961(CDK8 Antibody) at a dilution of 1/50(Nucleus).



In comparison with the IHC on the left, the same paraffin-embedded Human prostate cancer tissue is first treated with the synthetic peptide and then with 214961(Anti-CDK8 Antibody) at dilution 1/50.



The image on the left is immunohistochemistry of paraffin-embedded Human breast cancer tissue using 214961(Anti-CDK8 Antibody) at a dilution of 1/50.



In comparison with the IHC on the left, the same paraffin-embedded Human breast cancer tissue is first treated with synthetic peptide and then with D162681(Anti-CDK8 Antibody) at dilution 1/50.