

## CDNF RABBIT PAB

**Cat.#:** N225143

**Product Name:** Anti-CDNF Rabbit pAb

**Synonyms:** Cerebral dopamine neurotrophic factor (ARMET-like protein 1; Conserved dopamine neurotrophic factor)

**UNIPROT ID:** Q49AH0

**Background:** Trophic factor for dopamine neurons.

**Immunogen:** Synthetic peptide from human protein at AA range: 31-80

**Applications:** IHC-P,ELISA

**Recommended Dilutions:** IHC: 1/50-1/100 ELISA: 1/10000

**Host Species:** Rabbit

**Clonality:** Rabbit Polyclonal

**Clone ID:** -

**MW:** -

**Isotype:** IgG

**Purification:** Affinity Purified

**Species Reactivity:** Human

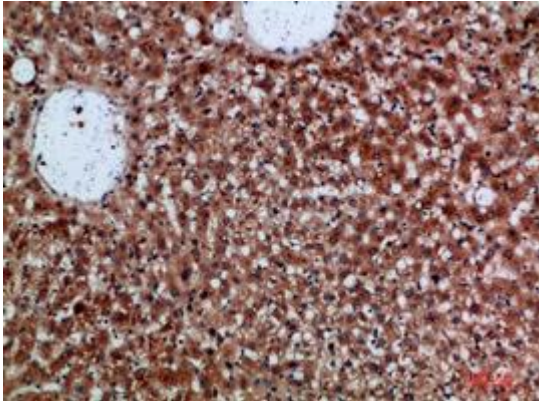
**Conjugation:** Unconjugated

**Modification:** Unmodified

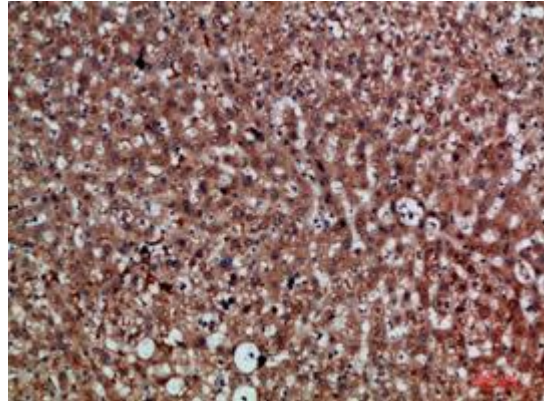
**Constituents:** PBS (without Mg<sup>2+</sup> and Ca<sup>2+</sup>), pH 7.3 containing 50% glycerol, 0.5% BSA and 0.02% sodium azide

**Research Areas:** Neuroscience

**Storage & Shipping:** Store at -20°C. Avoid repeated freezing and thawing



Immunohistochemical analysis of paraffin-embedded Human tonsils using CDNF antibody. High-pressure and temperature Sodium Citrate pH 6.0 was used for antigen retrieval.



Immunohistochemistry analysis of paraffin-embedded Human liver using CDNF antibody. High-pressure and temperature Sodium Citrate pH 6.0 was used for antigen retrieval.