

## CDV3 RABBIT PAB

**Cat.#:** S221711

**Product Name:** Anti-CDV3 Rabbit Polyclonal Antibody

**Synonyms:** H41

**UNIPROT ID:** Q9UKY7 (Gene Accession - NP\_060018 )

**Background:** The CDV3 protein is a 258 amino acid protein that localizes in the cytoplasm. It acts as a repressor of Neu and subsequently may be involved in the progression of some cancers, including breast cancer, gliomas and prostate tumors.

**Immunogen:** Synthetic peptide of human CDV3

**Applications:** ELISA, IHC

**Recommended Dilutions:** IHC: 20-100; ELISA: 5000-10000

**Host Species:** Rabbit

**Clonality:** Rabbit Polyclonal

**Isotype:** Immunogen-specific rabbit IgG

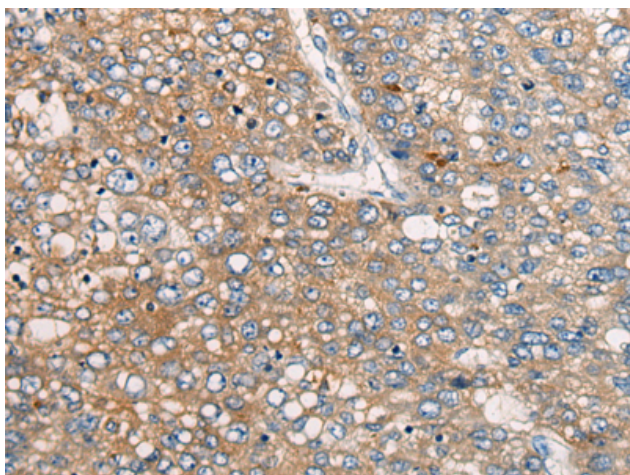
**Purification:** Antigen affinity purification

**Species Reactivity:** Human, Mouse

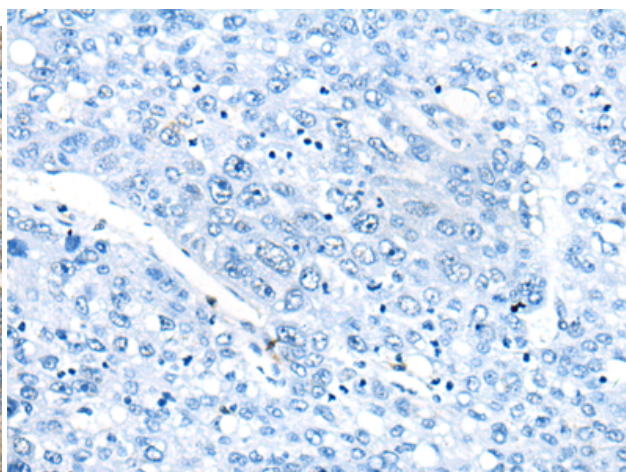
**Constituents:** PBS (without Mg<sup>2+</sup> and Ca<sup>2+</sup>), pH 7.4, 150 mM NaCl, 0.05% Sodium Azide and 40% glycerol

**Research Areas:** Cell Biology

**Storage & Shipping:** Store at -20°C. Avoid repeated freezing and thawing



Immunohistochemistry analysis of paraffin embedded Human liver cancer tissue using 221711(CDV3 Antibody) at a dilution of 1/35(Cytoplasm).



In comparison with the IHC on the left, the same paraffin-embedded Human liver cancer tissue is first treated with the synthetic peptide and then with 221711(Anti-CDV3 Antibody) at dilution 1/35.