

## CDYL2 RABBIT PAB

**Cat.#:** S218465

**Product Name:** Anti-CDYL2 Rabbit Polyclonal Antibody

**Synonyms:** PCCP1

**UNIPROT ID:** Q8N8U2 (Gene Accession - BC069440)

**Background:** Chromodomain Y-like protein (CDYL) is a related ubiquitous nuclear protein expressed at moderate levels in most tissues. The gene encoding for the CDYL protein localizes to chromosome 6p25.1. CDYL2 contains 1 chromo domain. The exact function of CDYL2 remains unknown.

**Immunogen:** Fusion protein of human CDYL2

**Applications:** ELISA, IHC

**Recommended Dilutions:** IHC: 20-100; ELISA: 5000-10000

**Host Species:** Rabbit

**Clonality:** Rabbit Polyclonal

**Isotype:** Immunogen-specific rabbit IgG

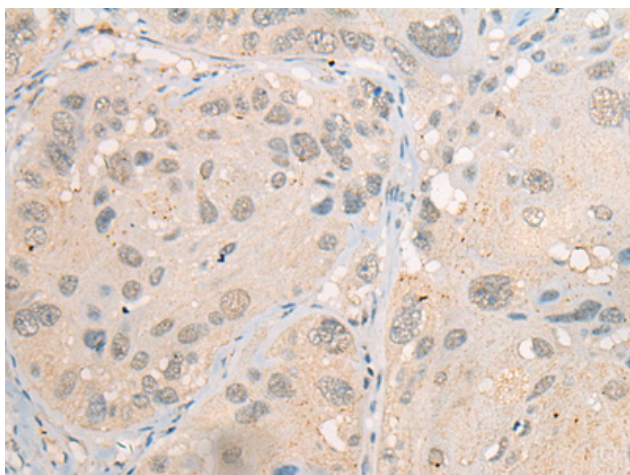
**Purification:** Antigen affinity purification

**Species Reactivity:** Human, Mouse

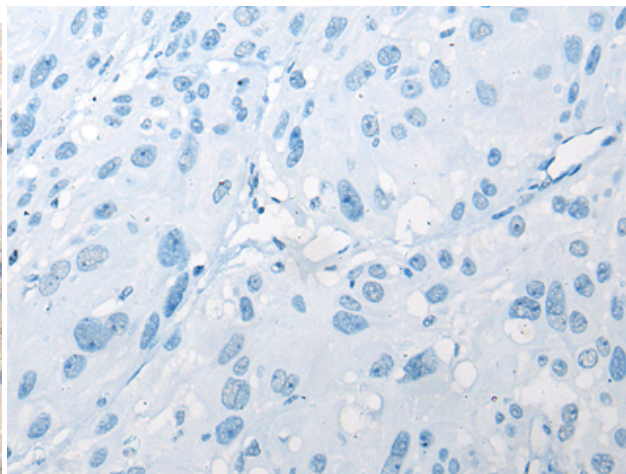
**Constituents:** PBS (without Mg<sup>2+</sup> and Ca<sup>2+</sup>), pH 7.4, 150 mM NaCl, 0.05% Sodium Azide and 40% glycerol

**Research Areas:** Epigenetics and Nuclear Signaling

**Storage & Shipping:** Store at -20°C. Avoid repeated freezing and thawing



Immunohistochemistry analysis of paraffin embedded Human esophagus cancer tissue using 218465(CDYL2 Antibody) at a dilution of 1/20(Nucleus).



In comparison with the IHC on the left, the same paraffin-embedded Human esophagus cancer tissue is first treated with the fusion protein and then with 218465(Anti-CDYL2 Antibody) at dilution 1/20.