

CEACAM6 RABBIT PAB

Cat.#: N225118

Product Name: Anti-CEACAM6 Rabbit pAb

Synonyms: CEACAM3; CD66D; CGM1; Carcinoembryonic antigen-related cell adhesion molecule 3; Carcinoembryonic antigen CGM1; CD66d; CEACAM6; NCA; Carcinoembryonic antigen-related cell adhesion molecule 6; Non-specific crossreacting antigen; Normal cross-reacting antigen; CD66c

UNIPROT ID: P40198/P40199

Background: This gene encodes a member of the family of carcinoembryonic antigen-related cell adhesion molecules (CEACAMs), which are used by several bacterial pathogens to bind and invade host cells. The encoded transmembrane protein directs phagocytosis of several bacterial species that is dependent on the small GTPase Rac. It is thought to serve an important role in controlling human-specific pathogens by the innate immune system. Alternatively spliced transcript variants have been described.

Immunogen: The antiserum was produced against synthesized peptide derived from the Internal region of human CEACAM3/CEACAM6. AA range:31-80

Applications: WB,ELISA

Recommended Dilutions: WB: 1/500-1/1000 ELISA: 1/10000

Host Species: Rabbit

Clonality: Rabbit Polyclonal

Clone ID: -

MW: Calculated MW: 27,37 kDa; Observed MW: 30 kDa

Isotype: IgG

Purification: Affinity Purified

Species Reactivity: Human

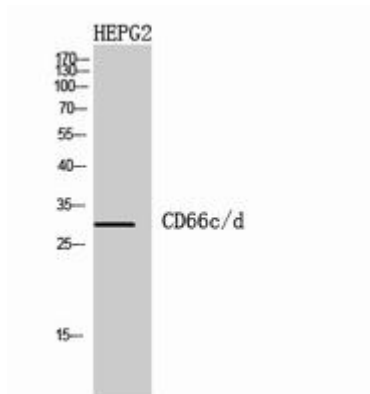
Conjugation: Unconjugated

Modification: Unmodified

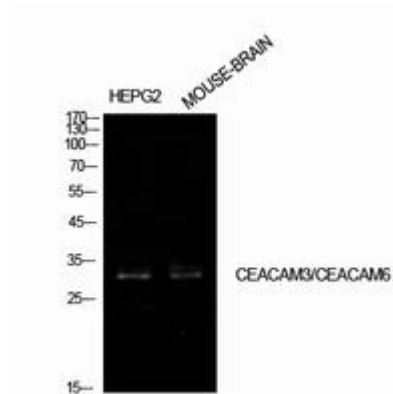
Constituents: PBS (without Mg²⁺ and Ca²⁺), pH 7.3 containing 50% glycerol, 0.5% BSA and 0.02% sodium azide

Research Areas: Immunology

Storage & Shipping: Store at -20°C. Avoid repeated freezing and thawing



Western blot analysis of CEACAM6 in HEPG2 lysates using CD66c/d antibody.



Western blot analysis of CEACAM6 in HepG2, mouse brain lysates using CEACAM6 antibody.