

CEBPZ RABBIT PAB

Cat.#: S221680

Product Name: Anti-CEBPZ Rabbit Polyclonal Antibody

Synonyms: CBF; CBF2; NOC1; HSP-CBF

UNIPROT ID: Q03701 (Gene Accession - NP_005751)

Background: Stimulates transcription from the HSP70 promoter.

Immunogen: Synthetic peptide of human CEBPZ

Applications: ELISA, WB, IHC

Recommended Dilutions: IHC: 25-100;WB: 200-1000;ELISA: 5000-10000

Host Species: Rabbit

Clonality: Rabbit Polyclonal

Isotype: Immunogen-specific rabbit IgG

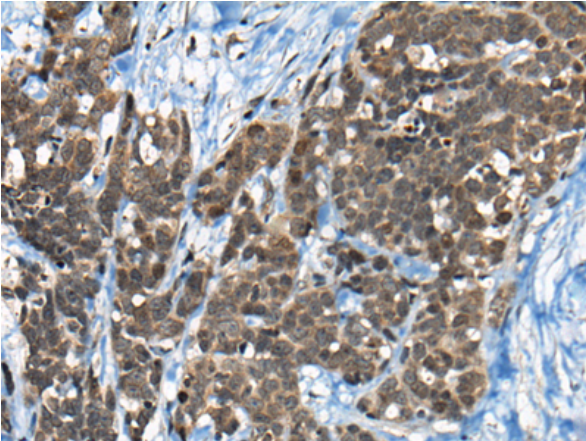
Purification: Antigen affinity purification

Species Reactivity: Human

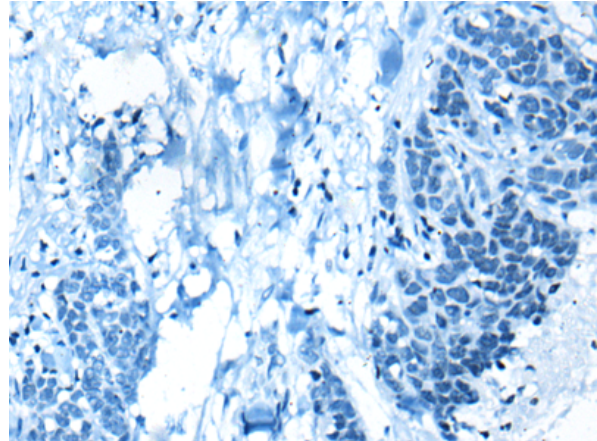
Constituents: PBS (without Mg²⁺ and Ca²⁺), pH 7.4, 150 mM NaCl, 0.05% Sodium Azide and 40% glycerol

Research Areas: Epigenetics and Nuclear Signaling

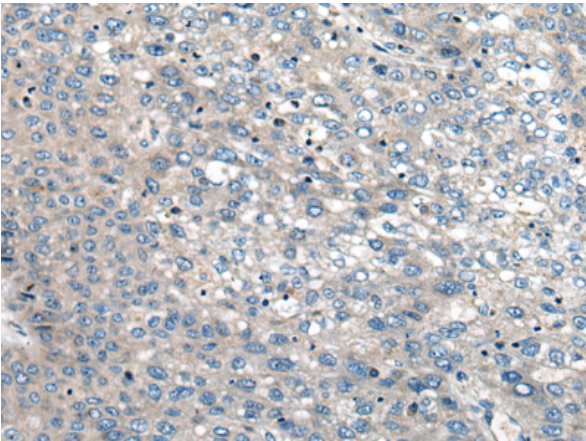
Storage & Shipping: Store at -20°C. Avoid repeated freezing and thawing



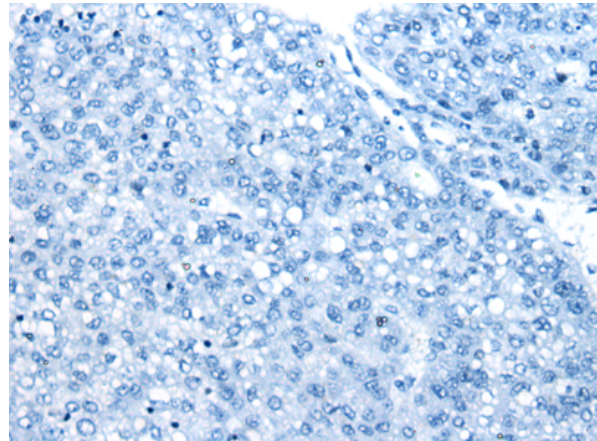
Immunohistochemistry analysis of paraffin embedded Human thyroid cancer tissue using 221680(CEBPZ Antibody) at a dilution of 1/20(Nucleus or Cytoplasm).



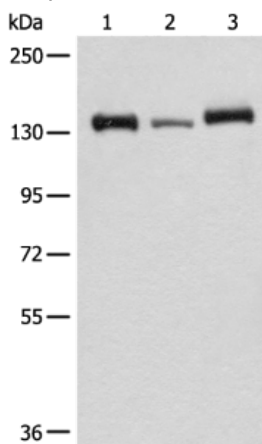
In comparison with the IHC on the left, the same paraffin-embedded Human thyroid cancer tissue is first treated with the synthetic peptide and then with 221680(Anti-CEBPZ Antibody) at dilution 1/20.



The image on the left is immunohistochemistry of paraffin-embedded Human liver cancer tissue using 221680(Anti-CEBPZ Antibody) at a dilution of 1/20.



In comparison with the IHC on the left, the same paraffin-embedded Human liver cancer tissue is first treated with synthetic peptide and then with D263383(Anti-CEBPZ Antibody) at dilution 1/20.



Gel: 6%SDS-PAGE, Lysate: 40 μ g;
Lane 1-3: HeLa, 293T and K562 cell lysates;
Primary antibody: 221680(CEBPZ Antibody) at dilution 1/200;
Secondary antibody: Goat anti rabbit IgG at 1/8000 dilution;
Exposure time: 5 seconds



Product Description

Pioneering GTPase and Oncogene Product Development since 2010
