

CELA1 RABBIT PAB

Cat.#: S221714

Product Name: Anti-CELA1 Rabbit Polyclonal Antibody

Synonyms: ELA1

UNIPROT ID: Q9UNI1 (Gene Accession - NP_001962)

Background: Elastases form a subfamily of serine proteases that hydrolyze many proteins in addition to elastin. Humans have six elastase genes which encode the structurally similar proteins elastase 1, 2, 2A, 2B, 3A, and 3B. Unlike other elastases, pancreatic elastase 1 is not expressed in the pancreas. To date, elastase 1 expression has only been detected in skin keratinocytes. Clinical literature that describes human elastase 1 activity in the pancreas or fecal material is actually referring to chymotrypsin-like elastase family, member 3B.

Immunogen: Synthetic peptide of human CELA1

Applications: ELISA, IHC

Recommended Dilutions: IHC: 50-300; ELISA: 500-1000

Host Species: Rabbit

Clonality: Rabbit Polyclonal

Isotype: Immunogen-specific rabbit IgG

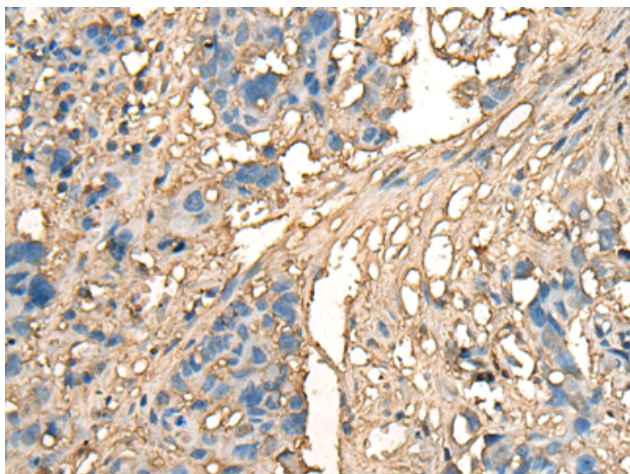
Purification: Antigen affinity purification

Species Reactivity: Human, Mouse, Rat

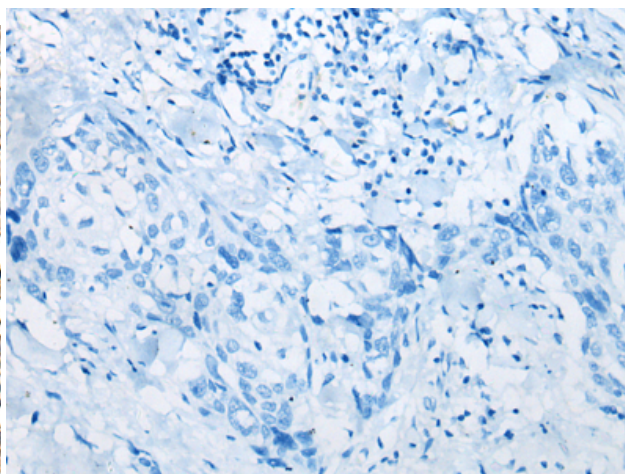
Constituents: PBS (without Mg²⁺ and Ca²⁺), pH 7.4, 150 mM NaCl, 0.05% Sodium Azide and 40% glycerol

Research Areas: Cell Biology

Storage & Shipping: Store at -20°C. Avoid repeated freezing and thawing



Immunohistochemistry analysis of paraffin embedded Human lung cancer tissue using 221714(CELA1 Antibody) at a dilution of 1/70 (Secreted).



In comparison with the IHC on the left, the same paraffin-embedded Human lung cancer tissue is first treated with the synthetic peptide and then with 221714(Anti-CELA1 Antibody) at dilution 1/70.