

## CELF4 RABBIT PAB

**Cat.#:** S215383

**Product Name:** Anti-CELF4 Rabbit Polyclonal Antibody

**Synonyms:** CELF-4; BRUNOL4

**UNIPROT ID:** Q9BZC1 (Gene Accession - NP\_064565 )

**Background:** Members of the CELF/BRUNOL protein family contain two N-terminal RNA recognition motif (RRM) domains, one C-terminal RRM domain, and a divergent segment of 160-230 aa between the second and third RRM domains. Members of this protein family regulate pre-mRNA alternative splicing and may also be involved in mRNA editing, and translation. Multiple transcript variants encoding different isoforms have been found for this gene.

**Immunogen:** Synthetic peptide of human CELF4

**Applications:** ELISA, IHC

**Recommended Dilutions:** IHC: 20-100; ELISA: 5000-10000

**Host Species:** Rabbit

**Clonality:** Rabbit Polyclonal

**Isotype:** Immunogen-specific rabbit IgG

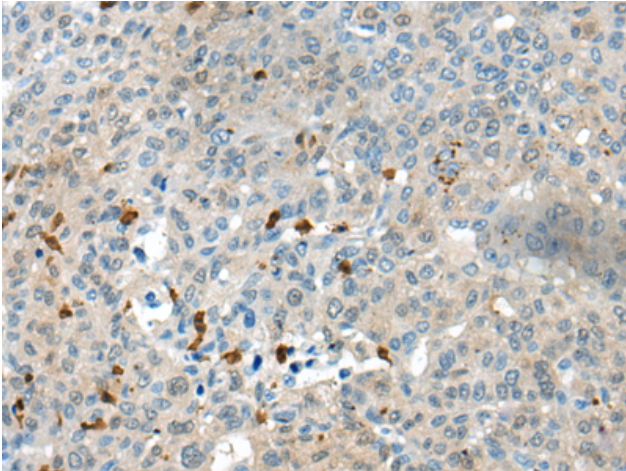
**Purification:** Antigen affinity purification

**Species Reactivity:** Human, Mouse

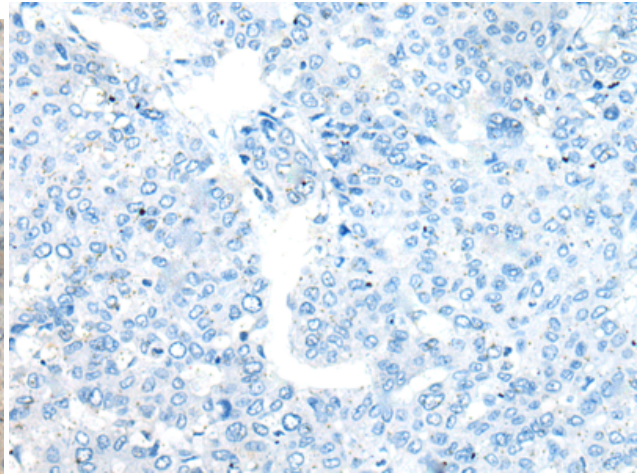
**Constituents:** PBS (without Mg<sup>2+</sup> and Ca<sup>2+</sup>), pH 7.4, 150 mM NaCl, 0.05% Sodium Azide and 40% glycerol

**Research Areas:** Epigenetics and Nuclear Signaling

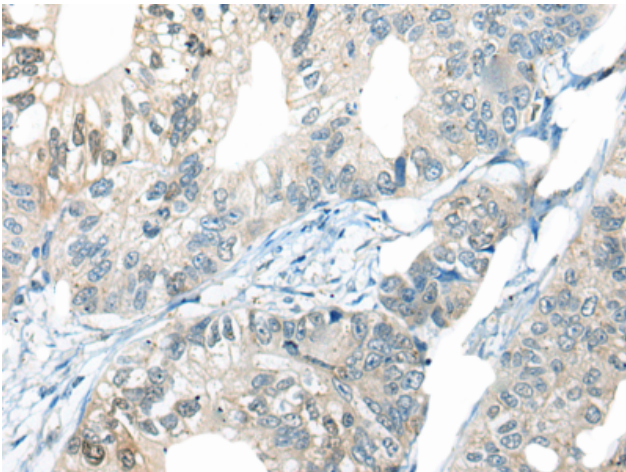
**Storage & Shipping:** Store at -20°C. Avoid repeated freezing and thawing



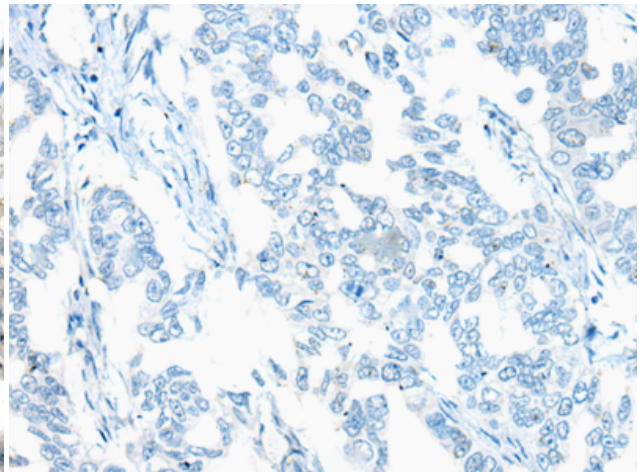
Immunohistochemistry analysis of paraffin embedded Human liver cancer tissue using 215383(CELF4 Antibody) at a dilution of 1/20(Cytoplasm).



In comparison with the IHC on the left, the same paraffin-embedded Human liver cancer tissue is first treated with the synthetic peptide and then with 215383(Anti-CELF4 Antibody) at dilution 1/20.



The image on the left is immunohistochemistry of paraffin-embedded Human gastric cancer tissue using 215383(Anti-CELF4 Antibody) at a dilution of 1/20.



In comparison with the IHC on the left, the same paraffin-embedded Human gastric cancer tissue is first treated with synthetic peptide and then with D163293(Anti-CELF4 Antibody) at dilution 1/20.