

## CELLUBREVIN RABBIT MAB

**Cat.#:** N263267

**Product Name:** Anti-Cellubrevin Rabbit Monoclonal Antibody

**Synonyms:** CEB; Cellubrevin; Synaptobrevin 3; VAMP3

**UNIPROT ID:** Q15836

**Background:** SNARE involved in vesicular transport from the late endosomes to the trans-Golgi network.

**Immunogen:** Recombinant protein of human Cellubrevin

**Applications:** WB, ICC/IF, IP

**Recommended Dilutions:** WB: 1/500-1/1000 IF: 1/50-1/200 IP: 1/20

**Host Species:** Rabbit

**Clonality:** Rabbit Monoclonal

**Clone ID:** R01-8D3

**MW:** Calculated MW: 11 kDa; Observed MW: 11 kDa

**Isotype:** IgG

**Purification:** Affinity Purified

**Species Reactivity:** Human

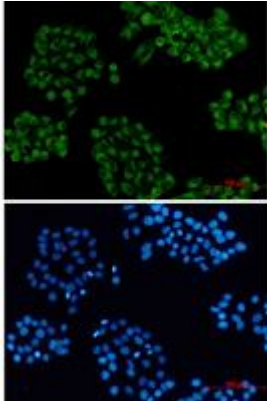
**Conjugation:** Unconjugated

**Modification:** Unmodified

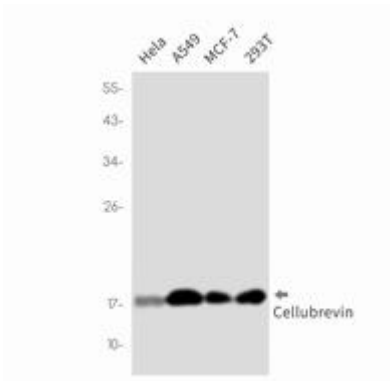
**Constituents:** PBS (without Mg<sup>2+</sup> and Ca<sup>2+</sup>), pH 7.3 containing 50% glycerol, 0.5% BSA and 0.02% sodium azide

**Research Areas:** Signal Transduction

**Storage & Shipping:** Store at -20°C. Avoid repeated freezing and thawing



Immunocytochemistry analysis of Cellubrevin (green) in hela using Cellubrevin antibody, and DAPI(blue)



Western blot analysis of ubrevin in HeLa, A549, MCF-7, 293T lysates using ubrevin antibody.