

CELLULAR APOPTOSIS SUSCEPTIBILITY RABBIT MAB

Cat.#: N262027

Product Name: Anti-Cellular Apoptosis Susceptibility Rabbit Monoclonal Antibody

Synonyms: CSE1L; CAS; CSE1; Exp2; Importin-alpha re-exporter; Exportin-2; XPO2

UNIPROT ID: P55060

Background: Export receptor for importin-alpha. Mediates importin-alpha re-export from the nucleus to the cytoplasm after import substrates (cargos) have been released into the nucleoplasm. In the nucleus binds cooperatively to importin-alpha and to the GTPase Ran in its active GTP-bound form.

Immunogen: A synthetic peptide of human Cellular Apoptosis Susceptibility

Applications: WB,IHC-F,IHC-P,ICC/IF

Recommended Dilutions: WB: 1/500-1/1000 IHC: 1/50-1/100 IF: 1/50-1/200

Host Species: Rabbit

Clonality: Rabbit Monoclonal

Clone ID: R09-1C6

MW: Calculated MW: 110 kDa; Observed MW: 110 kDa

Isotype: IgG

Purification: Affinity Purified

Species Reactivity: Human,Mouse

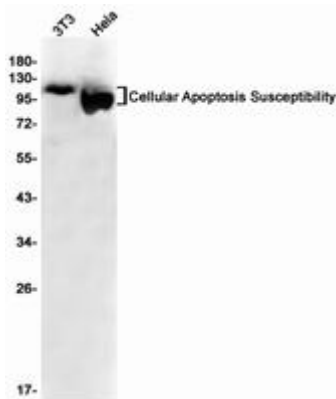
Conjugation: Unconjugated

Modification: Unmodified

Constituents: PBS (without Mg²⁺ and Ca²⁺), pH 7.3 containing 50% glycerol, 0.5% BSA and 0.02% sodium azide

Research Areas: Cell Biology

Storage & Shipping: Store at -20°C. Avoid repeated freezing and thawing



Western blot analysis of ular Apoptosis Susceptibility in 3T3, HeLa lysates using ular Apoptosis Susceptibility antibody.