

CEND1 RABBIT PAB

Cat.#: S221716

Product Name: Anti-CEND1 Rabbit Polyclonal Antibody

Synonyms: BM88

UNIPROT ID: Q8N111 (Gene Accession - NP_057648)

Background: BM88, also known as CEND1 (cell cycle exit and neuronal differentiation protein 1), is a 149 amino acid protein that belongs to the CEND1 family. Involved in neuroblastoma cell differentiation, BM88 is a single-pass type IV membrane protein that is neuron specific. It is suggested that BM88 forms a dimer of two identical polypeptides linked by disulfide bridges. BM88 has a central proline-rich region containing four PxxP motifs, which typically bind SRC homology-3 (SH3) domains, as well as a putative C-terminal transmembrane region, and several potential sites for N-glycosylation, myristoylation and phosphorylation. It is also suggested that a novel signaling mechanism exists by which BM88 interferes with calcium release from inositol 1,4,5-trisphosphate-sensitive stores and exerts anti-proliferative and anti-apoptotic functions. BM88 is an important molecular target for HDAC inhibition, and transcription of BM88 is induced by trichostatin-A.

Immunogen: Synthetic peptide of human CEND1

Applications: ELISA, WB, IHC

Recommended Dilutions: IHC: 40-200;WB: 500-2000;ELISA: 5000-10000

Host Species: Rabbit

Clonality: Rabbit Polyclonal

Isotype: Immunogen-specific rabbit IgG

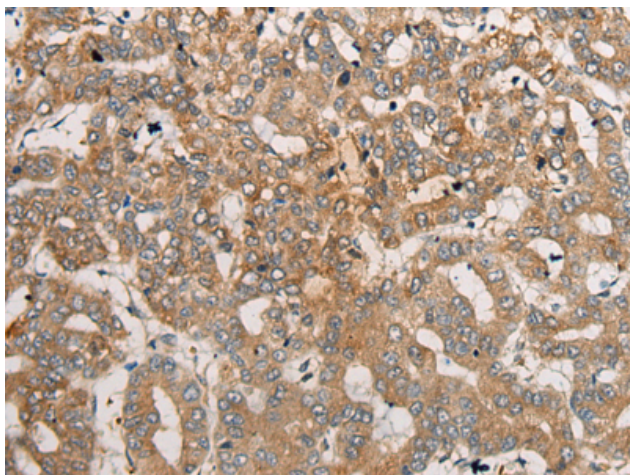
Purification: Antigen affinity purification

Species Reactivity: Human, Mouse, Rat

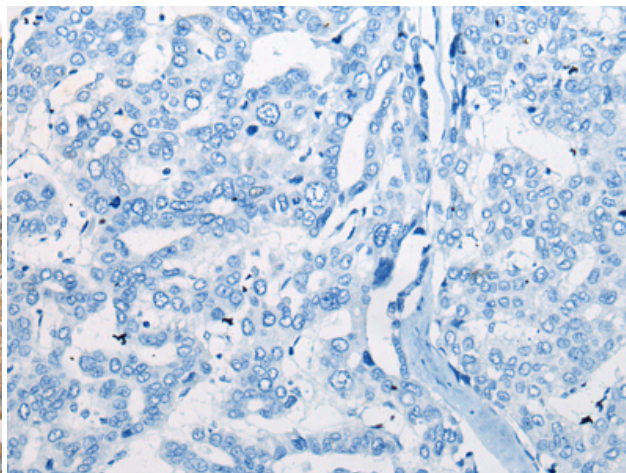
Constituents: PBS (without Mg²⁺ and Ca²⁺), pH 7.4, 150 mM NaCl, 0.05% Sodium Azide and 40% glycerol

Research Areas: Cancer, Neuroscience

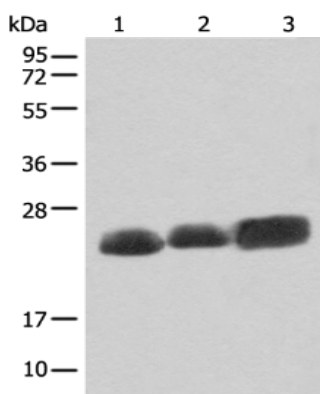
Storage & Shipping: Store at -20°C. Avoid repeated freezing and thawing



Immunohistochemistry analysis of paraffin embedded Human liver cancer tissue using 221716 (CEND1 Antibody) at a dilution of 1/50 (Cytoplasm).



In comparison with the IHC on the left, the same paraffin-embedded Human liver cancer tissue is first treated with the synthetic peptide and then with 221716 (Anti-CEND1 Antibody) at dilution 1/50.



Gel: 12% SDS-PAGE, Lysate: 40 μ g;
Lane 1-3: Mouse brain tissue, Rat brain tissue and Human cerebrum tissue lysates;
Primary antibody: 221716 (CEND1 Antibody) at dilution 1/500;
Secondary antibody: Goat anti rabbit IgG at 1/8000 dilution;
Exposure time: 40 seconds