

CENPBD1 RABBIT PAB

Cat.#: S219238

Product Name: Anti-CENPBD1 Rabbit Polyclonal Antibody

Synonyms:

UNIPROT ID: B2RD01 (Gene Accession - BC009263)

Background: The function of this protein remains unknown.

Immunogen: Fusion protein of human CENPBD1

Applications: ELISA, IHC

Recommended Dilutions: IHC: 50-200; ELISA: 5000-10000

Host Species: Rabbit

Clonality: Rabbit Polyclonal

Isotype: Immunogen-specific rabbit IgG

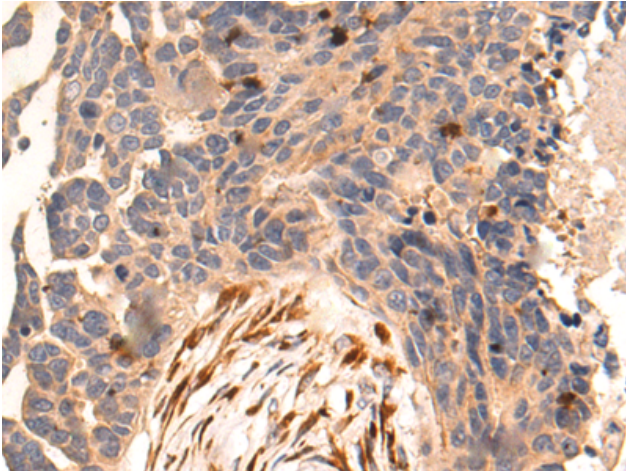
Purification: Antigen affinity purification

Species Reactivity: Human

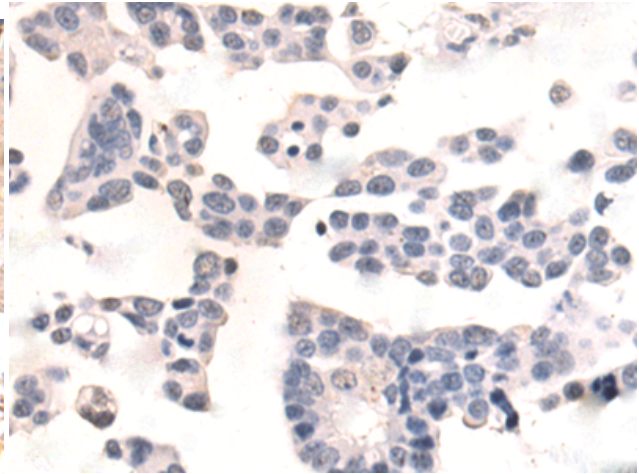
Constituents: PBS (without Mg²⁺ and Ca²⁺), pH 7.4, 150 mM NaCl, 0.05% Sodium Azide and 40% glycerol

Research Areas: Cell Biology

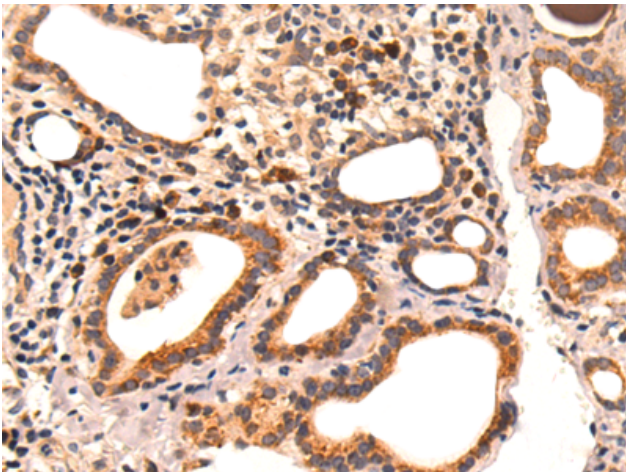
Storage & Shipping: Store at -20°C. Avoid repeated freezing and thawing



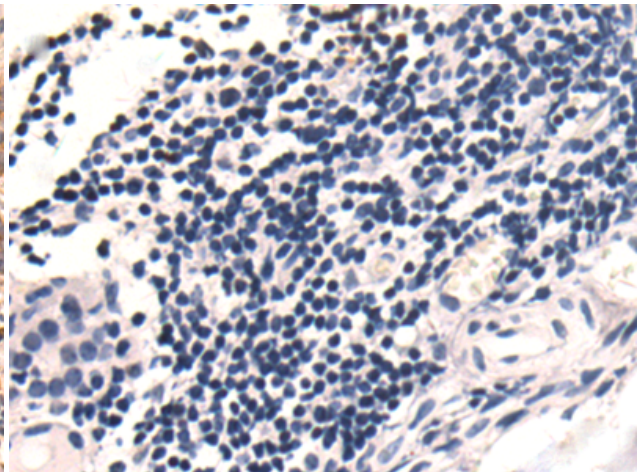
Immunohistochemistry analysis of paraffin embedded Human colorectal cancer tissue using 219238(CENPBD1 Antibody) at a dilution of 1/80(Cytoplasm and Cell membrane).



In comparison with the IHC on the left, the same paraffin-embedded Human colorectal cancer tissue is first treated with the fusion protein and then with 219238(Anti-CENPBD1 Antibody) at dilution 1/80.



The image on the left is immunohistochemistry of paraffin-embedded Human thyroid cancer tissue using 219238(Anti-CENPBD1 Antibody) at a dilution of 1/80.



In comparison with the IHC on the left, the same paraffin-embedded Human thyroid cancer tissue is first treated with fusion protein and then with D226111(Anti-CENPBD1 Antibody) at dilution 1/80.