

CENPN RABBIT PAB

Cat.#: S211036

Product Name: Anti-CENPN Rabbit Polyclonal Antibody

Synonyms: BM039; CENP-N; ICEN32; C16orf60

UNIPROT ID: Q96H22 (Gene Accession - BC008972)

Background: The protein encoded by this gene forms part of the nucleosome-associated complex and is important for kinetochore assembly. It is bound to kinetochores during S phase and G2 and recruits other proteins to the centromere. Pseudogenes of this gene are located on chromosome 2. Alternative splicing results in multiple transcript variants that encode different protein isoforms.

Immunogen: Full length fusion protein

Applications: ELISA, WB, IHC

Recommended Dilutions: IHC: 100-300;WB: 1000-5000;ELISA: 5000-10000

Host Species: Rabbit

Clonality: Rabbit Polyclonal

Isotype: Immunogen-specific rabbit IgG

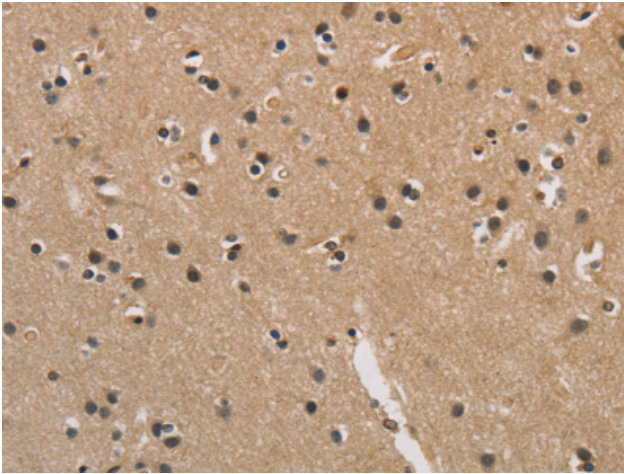
Purification: Antigen affinity purification

Species Reactivity: Human

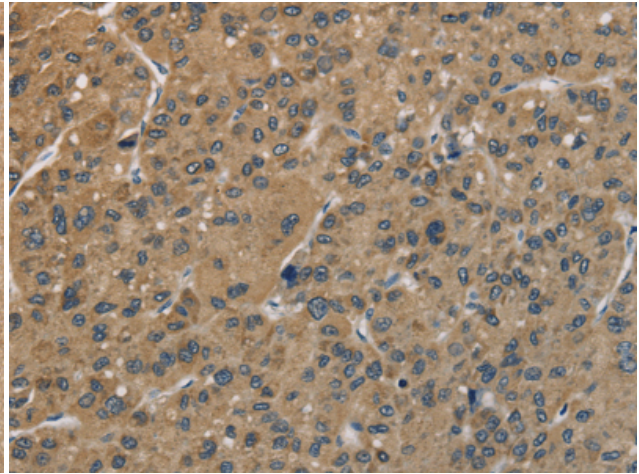
Constituents: PBS (without Mg²⁺ and Ca²⁺), pH 7.4, 150 mM NaCl, 0.05% Sodium Azide and 40% glycerol

Research Areas: Epigenetics and Nuclear Signaling

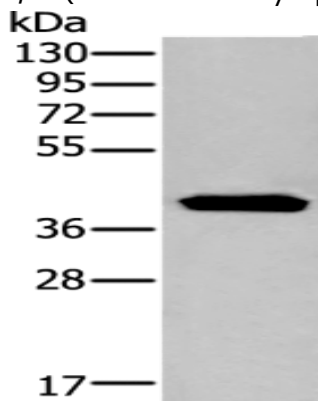
Storage & Shipping: Store at -20°C. Avoid repeated freezing and thawing



Immunohistochemistry analysis of paraffin-embedded Human brain tissue using 211036(CENPN Antibody) at a dilution of 1/70(Nucleus and Cytoplasm).



Immunohistochemistry analysis of paraffin-embedded Human liver cancer tissue using 211036(Anti-CENPN Antibody) at a dilution of 1/70.



Gel: 8%SDS-PAGE, Lysate: 40 μ g;
Lane: Human left kidney tissue lysate;
Primary antibody: 211036(CENPN Antibody) at dilution 1/800;
Secondary antibody: Goat anti rabbit IgG at 1/8000 dilution;
Exposure time: 10 seconds