

CENPV RABBIT PAB

Cat.#: S214600

Product Name: Anti-CENPV Rabbit Polyclonal Antibody

Synonyms: p30; PRR6; CENP-V; 3110013H01Rik

UNIPROT ID: Q7Z7K6 (Gene Accession - NP_859067)

Background: Predicted to enable carbon-sulfur lyase activity and metal ion binding activity. Involved in pericentric heterochromatin assembly; positive regulation of cytokinesis; and regulation of chromosome organization. Acts upstream of or within amoeboid-type cell migration. Located in several cellular components, including midbody; nucleus; and spindle midzone.

Immunogen: Synthetic peptide of human CENPV

Applications: ELISA, WB, IHC

Recommended Dilutions: IHC: 50-100;WB: 500-2000;ELISA: 5000-10000

Host Species: Rabbit

Clonality: Rabbit Polyclonal

Isotype: Immunogen-specific rabbit IgG

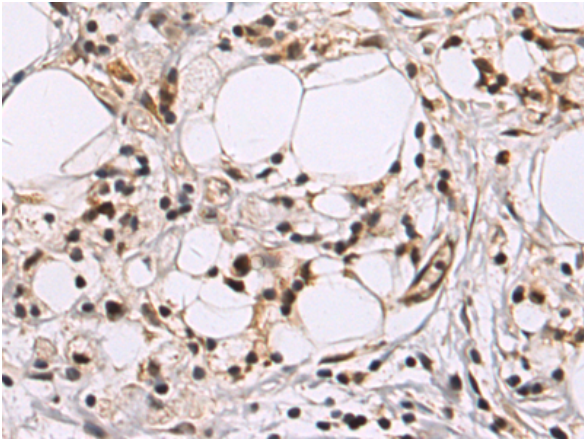
Purification: Antigen affinity purification

Species Reactivity: Human, Mouse

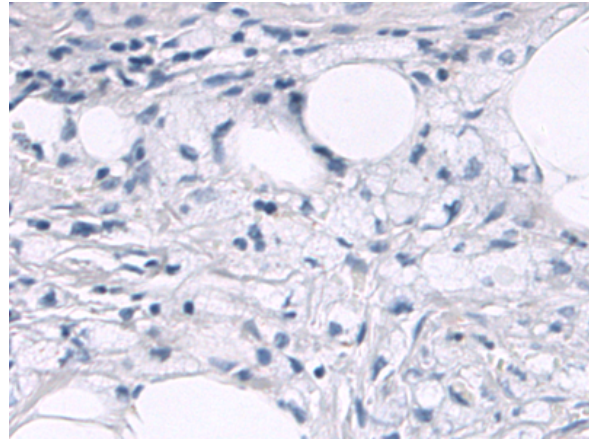
Constituents: PBS (without Mg²⁺ and Ca²⁺), pH 7.4, 150 mM NaCl, 0.05% Sodium Azide and 40% glycerol

Research Areas: Metabolism

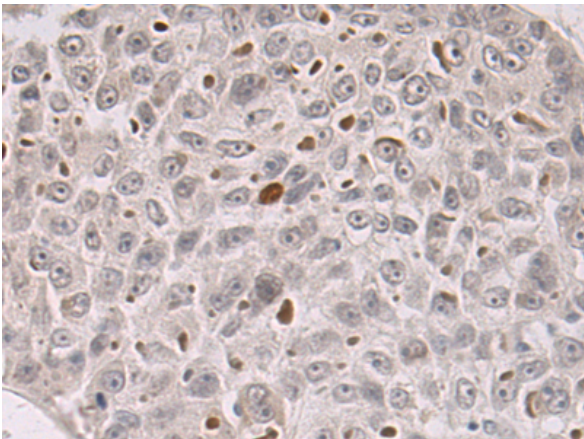
Storage & Shipping: Store at -20°C. Avoid repeated freezing and thawing



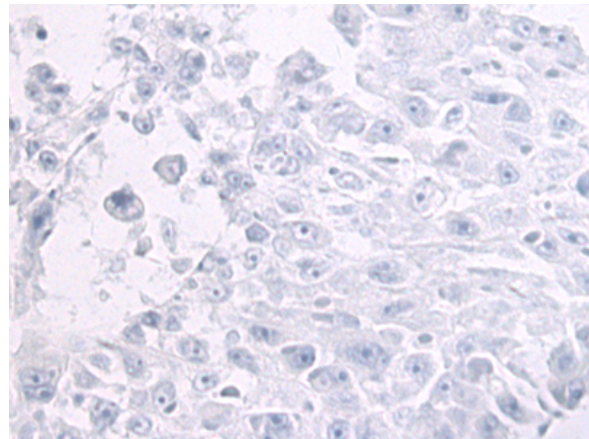
Immunohistochemistry analysis of paraffin embedded Human gastric cancer tissue using 214600(CENPV Antibody) at a dilution of 1/50(Nucleus).



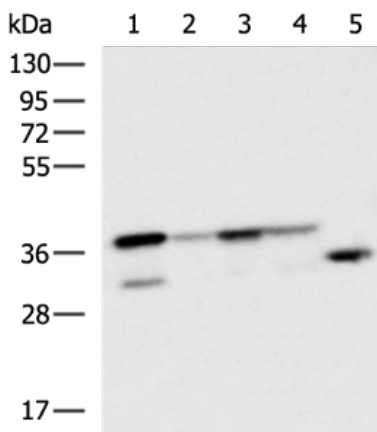
In comparison with the IHC on the left, the same paraffin-embedded Human gastric cancer tissue is first treated with the synthetic peptide and then with 214600(Anti-CENPV Antibody) at dilution 1/50.



The image on the left is immunohistochemistry of paraffin-embedded Human liver cancer tissue using 214600(Anti-CENPV Antibody) at a dilution of 1/50.



In comparison with the IHC on the left, the same paraffin-embedded Human liver cancer tissue is first treated with synthetic peptide and then with D162083(Anti-CENPV Antibody) at dilution 1/50.



Gel: 8%SDS-PAGE, Lysate: 40 µg;
 Lane 1-5: Raji cell, Hela cell, Jurkat cell, 293T cell,
 Mouse brain tissue lysate;
 Primary antibody: 214600(CENPV Antibody) at
 dilution 1/700;
 Secondary antibody: HRP-conjugated Goat anti
 rabbit IgG at 1/5000 dilution;
 Exposure time: 3 seconds



Product Description

Pioneering GTPase and Oncogene Product Development since 2010
