

CEP55 RABBIT MAB

Cat.#: N263268

Product Name: Anti-CEP55 Rabbit Monoclonal Antibody

Synonyms: CEP55; C10orf3; URCC6; Centrosomal protein of 55 kDa; Cep55; Up-regulated in colon cancer 6

UNIPROT ID: Q53EZ4

Background: Plays a role in mitotic exit and cytokinesis (PubMed:16198290, PubMed:17853893)

Immunogen: A synthetic peptide of human CEP55

Applications: WB, ICC/IF

Recommended Dilutions: WB: 1/500-1/1000 IF: 1/50-1/200

Host Species: Rabbit

Clonality: Rabbit Monoclonal

Clone ID: R05-6A6

MW: Calculated MW: 54 kDa; Observed MW: 54 kDa

Isotype: IgG

Purification: Affinity Purified

Species Reactivity: Human, Rat

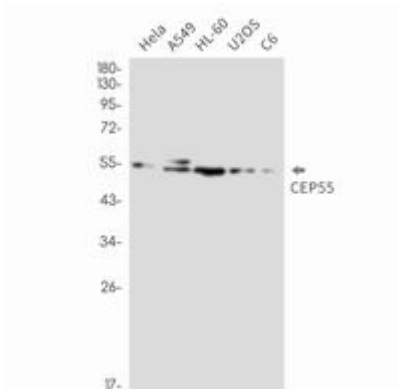
Conjugation: Unconjugated

Modification: Unmodified

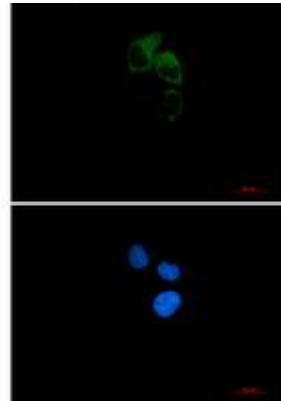
Constituents: PBS (without Mg²⁺ and Ca²⁺), pH 7.3 containing 50% glycerol, 0.5% BSA and 0.02% sodium azide

Research Areas: Cell Biology

Storage & Shipping: Store at -20°C. Avoid repeated freezing and thawing



Western blot analysis of CEP55 in HeLa, A549, HL-60, U2OS, C6 lysates using CEP55 antibody.



Immunocytochemistry analysis of CEP55 (green) in HeLa using CEP55 antibody, and DAPI (blue).